

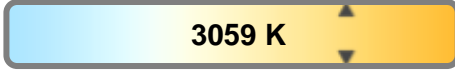
Light efficiency:



Light quality:



Color temperature:

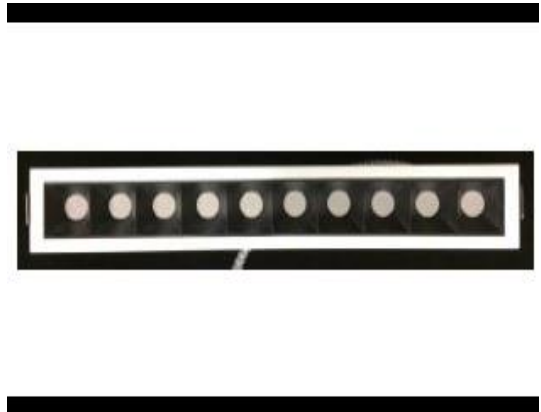


Output: 1086 lm

Peak: 1442 cd

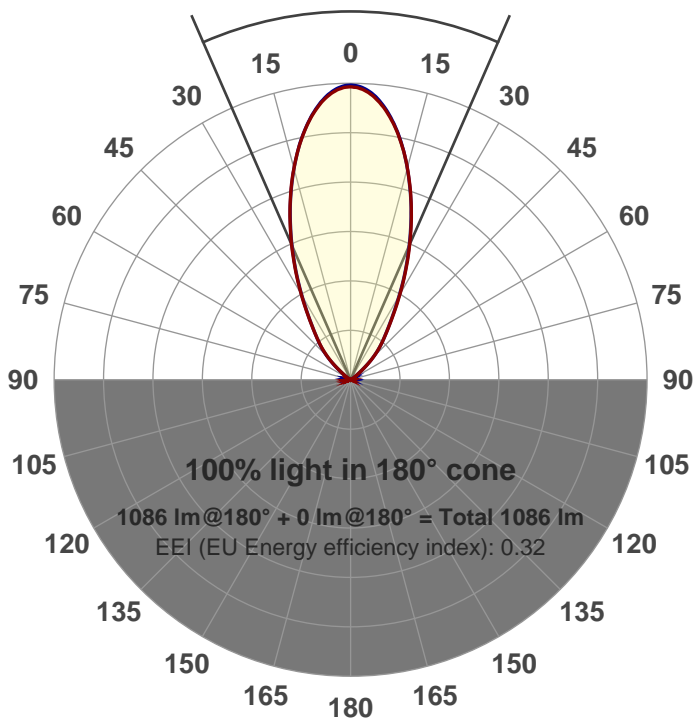
Power: 24.5 W

PF: 0.99



Beam angle

47.2°



Product name:
888-Wide-Blk
Item number:
888-Wide-Blk
Date and time:
8/3/2017 2:48:59 PM
Description:

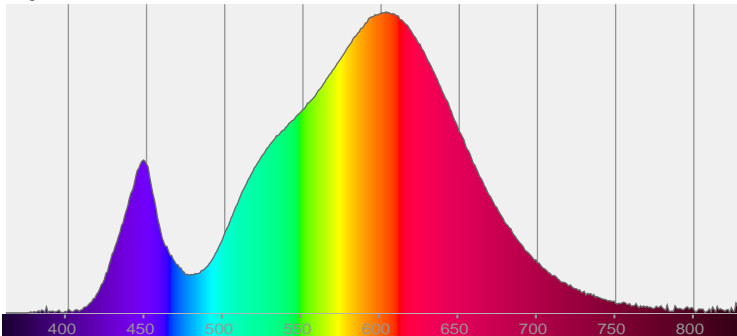
LUM: 1086

PPF: 16.1

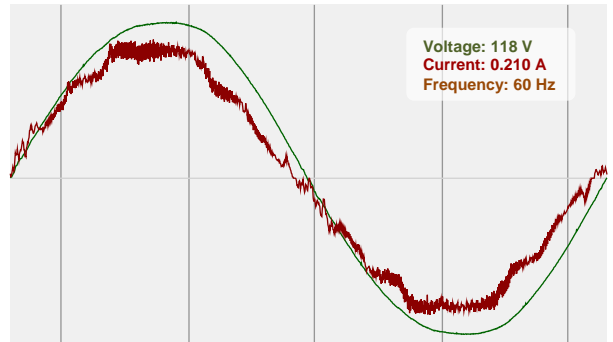


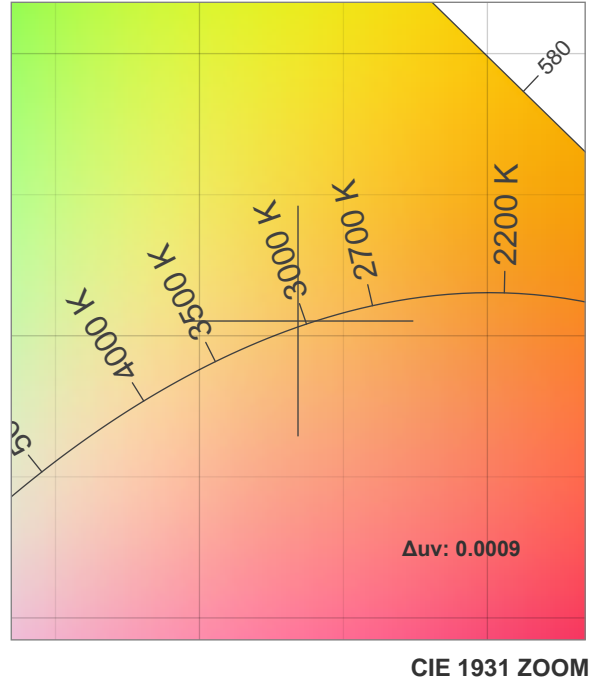
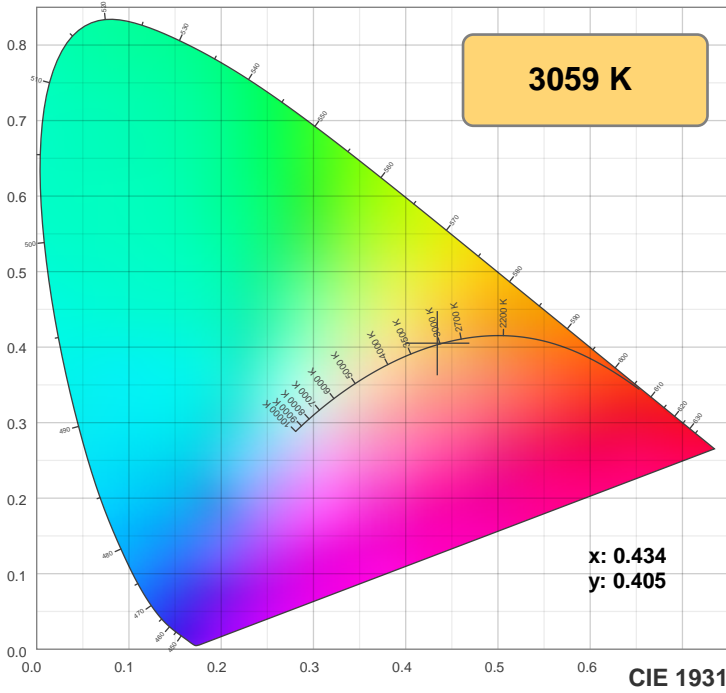
CIE 1931
x: 0.434
y: 0.405

Spectra



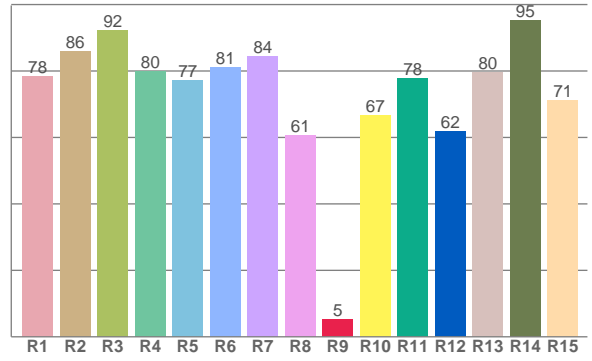
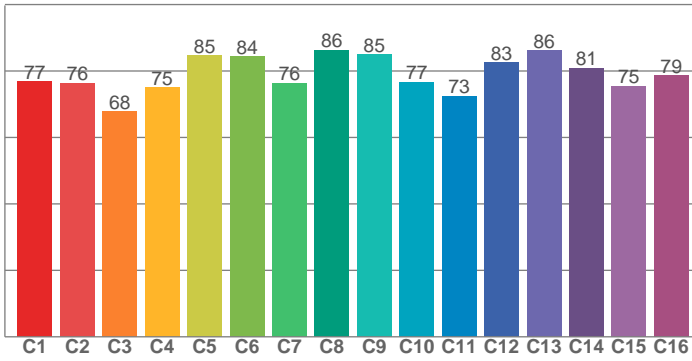
Power





TM30: 78.7

CRI: 79.9 (R1-R8)



CRI R values, only R1-R8 are used to calculate final CRI value

R1	R2	R3	R4	R5	R6	R7	R8	R9	R10	R11	R12	R13	R14	R15
78.3	85.8	92.3	79.8	77.2	81.0	84.4	60.6	5.2	66.6	77.8	61.7	79.5	95.2	71.2

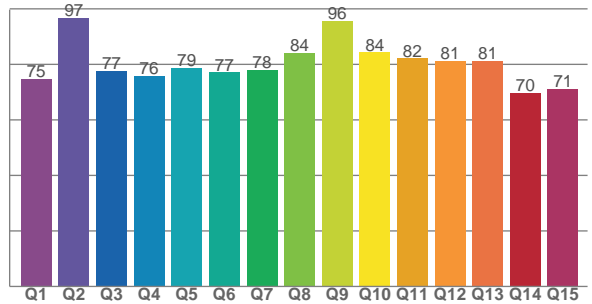
TM30 C values, 16 binned values out of total of 99 C values

C1	C2	C3	C4	C5	C6	C7	C8	C9	C10	C11	C12	C13	C14	C15	C16
76.9	76.4	67.8	75.1	84.6	84.3	76.3	86.3	84.9	76.7	72.5	82.7	86.1	80.9	75.5	78.6

CQS Q values

Q1	Q2	Q3	Q4	Q5	Q6	Q7	Q8	Q9	Q10	Q11	Q12	Q13	Q14	Q15
74.8	96.7	77.5	75.9	78.6	77.1	78.1	84.1	95.6	84.3	82.1	81.2	81.3	69.6	71.3

CQS: 79.1



Color parameters

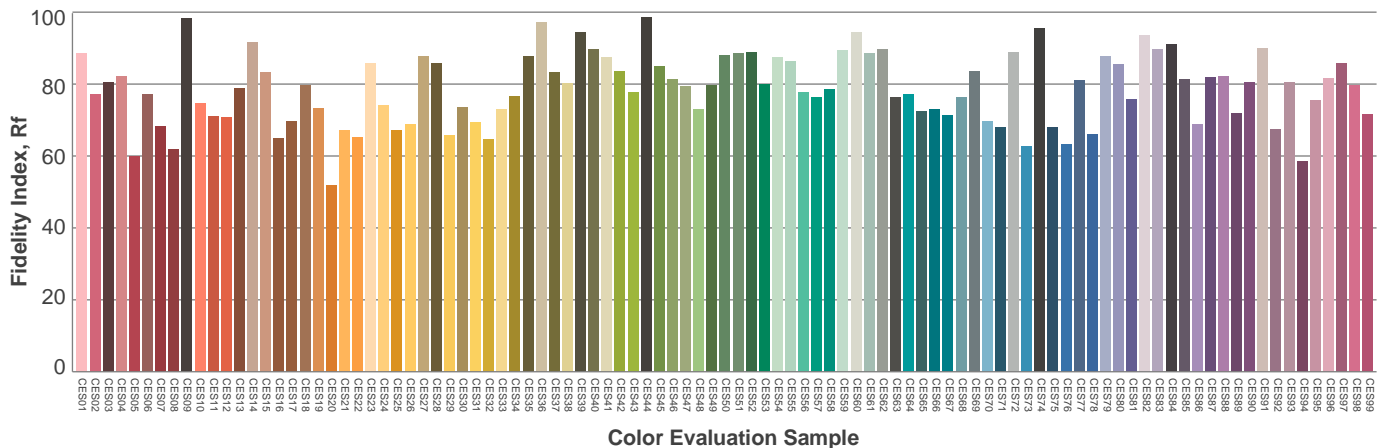
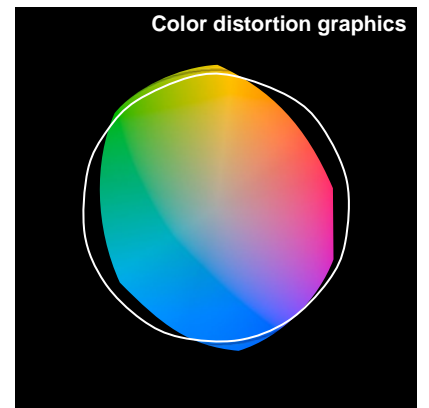
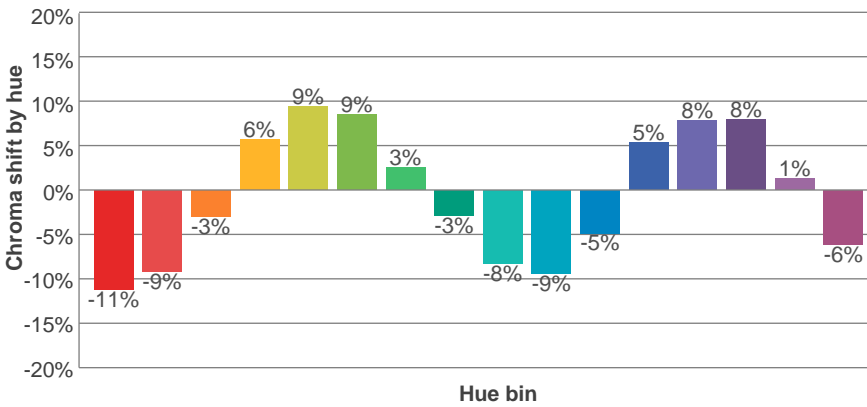
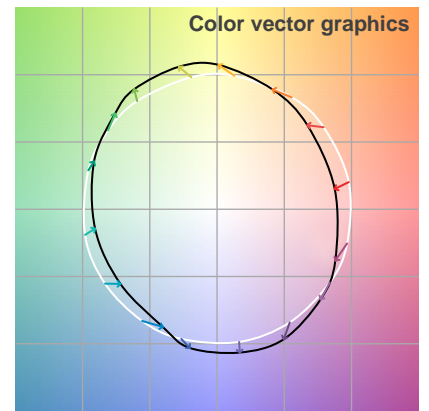
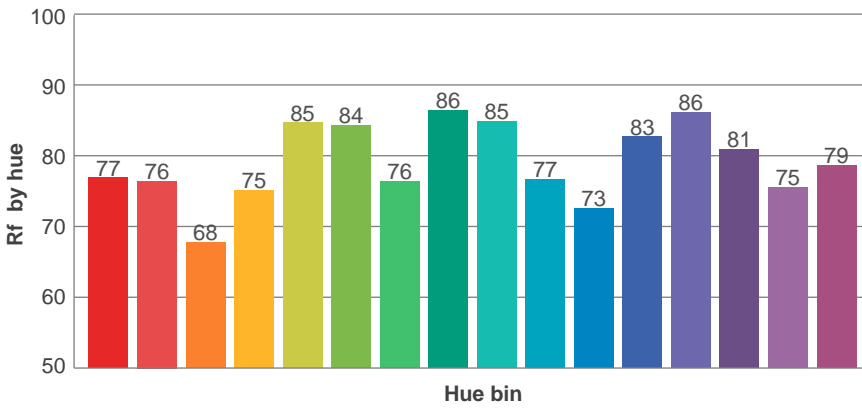
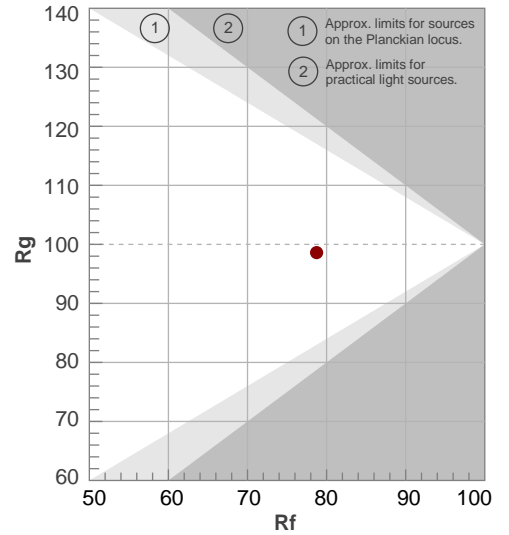
Color temperature	Color rendering index	Red component	Color fidelity	Color gamut	Color quality scale	Color coordinate cie 1931	Color coordinate cie 1931	Color coordinate	Color coordinate	Color deviation from black body
CCT	CRI	CRI R9	TM30 Rf	TM30 Rg	CQS	x	y	u	v	Δuv
3059 K	79.9	5.2	78.7	98.6	79.1	0.434	0.405	0.248	0.348	0.0009

TM30 details

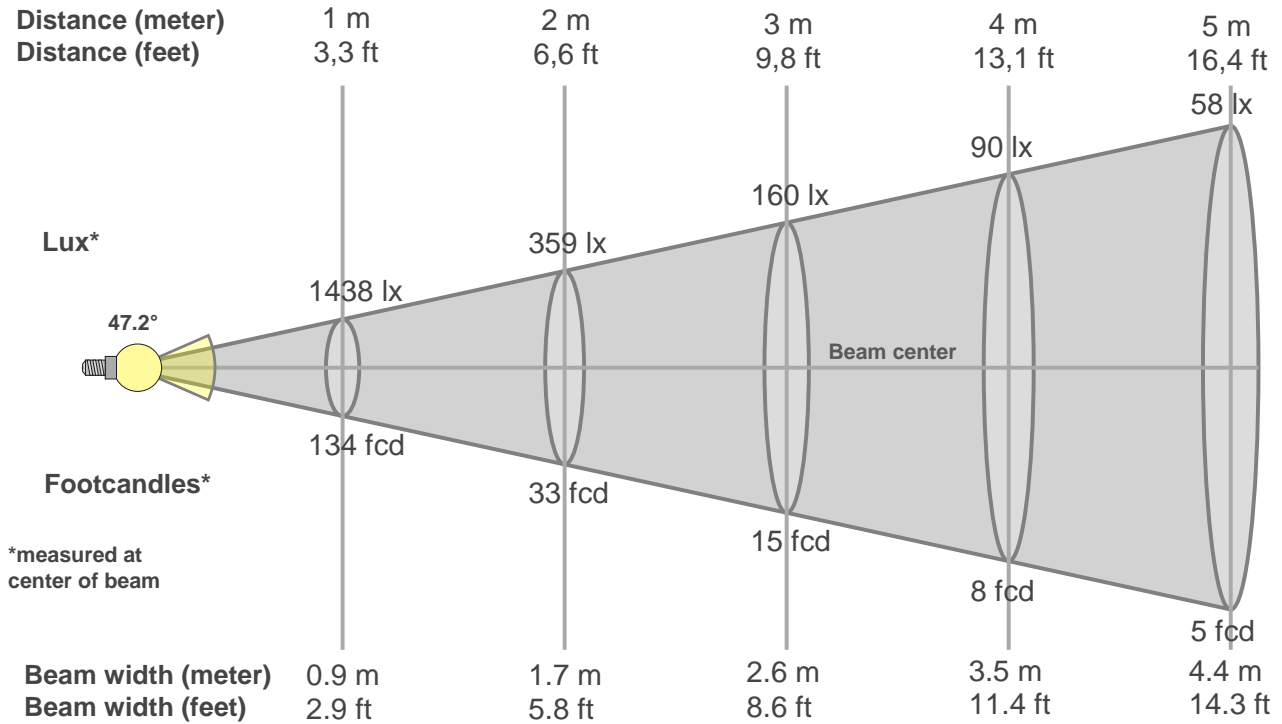
Rf 78.7
Fidelity index Rf

Rg 98.6
Gammut index Rg

Hue Bin	R _f	Graphic shifts (%)	
		Chroma	Hue
1	77	-11%	-3%
2	76	-9%	8%
3	68	-3%	15%
4	75	6%	13%
5	85	9%	8%
6	84	9%	-3%
7	76	3%	-13%
8	86	-3%	-7%
9	85	-8%	-3%
10	77	-9%	7%
11	73	-5%	15%
12	83	5%	7%
13	86	8%	-1%
14	81	8%	-11%
15	75	1%	-14%
16	79	-6%	-14%



Beam details



Beam intensities from 1-20m

1m	2m	3m	4m	5m	6m	7m	8m	9m	10m	11m	12m	13m	14m	15m	16m	17m	18m	19m	20m
3.3ft	6.6ft	9.8ft	13.1ft	16.4ft	19.7ft	23ft	26.2ft	29.5ft	32.8ft	36.1ft	39.4ft	42.7ft	45.9ft	49.2ft	52.5ft	55.8ft	59.1ft	62.3ft	65.6ft
1438lx	359lx	160lx	90lx	58lx	40lx	29lx	22lx	18lx	14lx	12lx	10lx	9lx	7lx	6lx	6lx	5lx	4lx	4lx	4lx
133.6fcd	33.4fcd	14.8fcd	8.3fcd	5.3fcd	3.7fcd	2.7fcd	2.1fcd	1.6fcd	1.3fcd	1.1fcd	0.9fcd	0.8fcd	0.7fcd	0.6fcd	0.5fcd	0.5fcd	0.4fcd	0.4fcd	0.3fcd

Intensities in 0° c-plane

0°	2°	4°	6°	8°	10°	12°	14°	16°	18°	20°	22°	24°	26°	28°	30°	32°	34°	36°	38°
1438	1425	1402	1365	1314	1254	1185	1110	1033	950	868	785	706	626	553	483	420	364	317	277
100%	99%	98%	95%	91%	87%	82%	77%	72%	66%	60%	55%	49%	44%	38%	34%	29%	25%	22%	19%

Intensities in 90° c-plane

0°	2°	4°	6°	8°	10°	12°	14°	16°	18°	20°	22°	24°	26°	28°	30°	32°	34°	36°	38°
1438	1433	1408	1369	1317	1255	1187	1109	1029	947	864	781	700	621	547	477	414	359	313	275
100%	100%	98%	95%	92%	87%	83%	77%	72%	66%	60%	54%	49%	43%	38%	33%	29%	25%	22%	19%

Intensities in 180° c-plane

0°	2°	4°	6°	8°	10°	12°	14°	16°	18°	20°	22°	24°	26°	28°	30°	32°	34°	36°	38°
1438	1425	1401	1363	1314	1255	1186	1113	1033	952	869	787	706	628	553	482	419	362	315	275
100%	99%	97%	95%	91%	87%	83%	77%	72%	66%	60%	55%	49%	44%	38%	34%	29%	25%	22%	19%

Intensities in 270° c-plane

0°	2°	4°	6°	8°	10°	12°	14°	16°	18°	20°	22°	24°	26°	28°	30°	32°	34°	36°	38°
1438	1434	1410	1371	1319	1258	1188	1112	1031	949	865	781	700	622	547	475	411	356	311	272
100%	100%	98%	95%	92%	87%	83%	77%	72%	66%	60%	54%	49%	43%	38%	33%	29%	25%	22%	19%

Beam angle 50%	Field angle 10%	Cutoff angle 2,5%	Intensity ratio in 120° cone	Intensity ratio in 90° cone
47.2°	91.8°	105.7°	1.0%	0.9%

THIS PAGE INTENSIONALLY LEFT BLANK