

Light efficiency:

**40 Lumen/Watt**

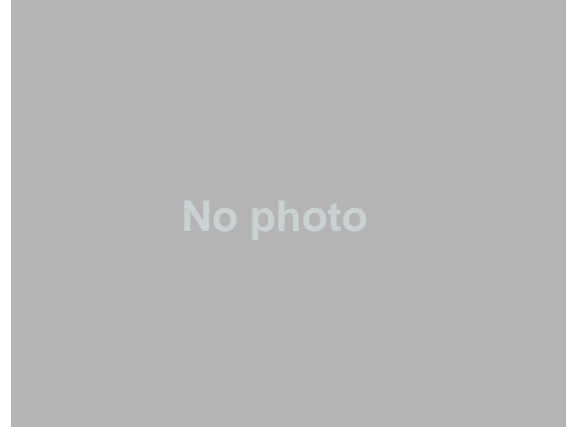
Light quality:

**CRI: 97.5**

Color temperature:

**3035 K**

**Output: 602 lm**  
**Peak: 1196 cd**  
**Power: 14.9 W**  
**PF: 0.97**

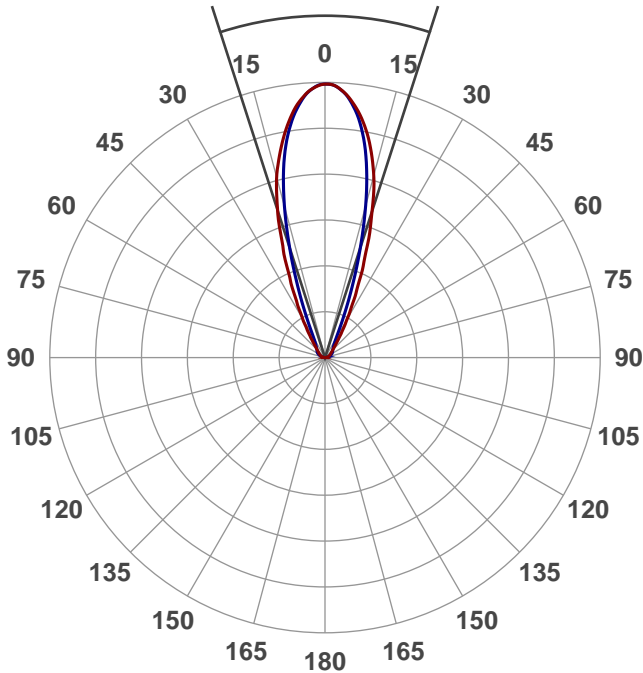


Product name:  
**811X-930-20-82A**

Date and time:  
**3/3/2017 12:46:02 PM**

Item number:  
**811X-930-20-82A**

Beam angle **35.7°** 2 PLANES

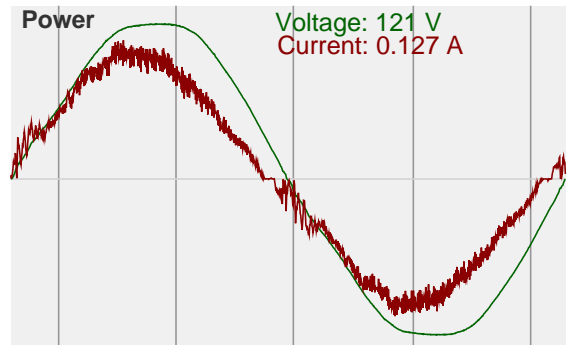
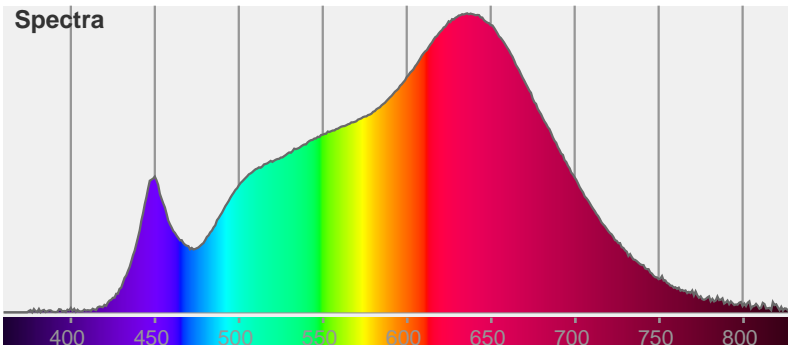


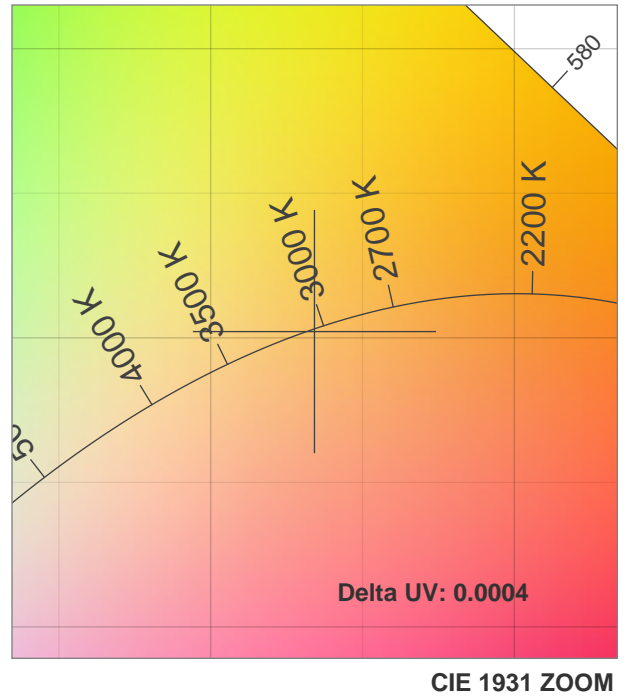
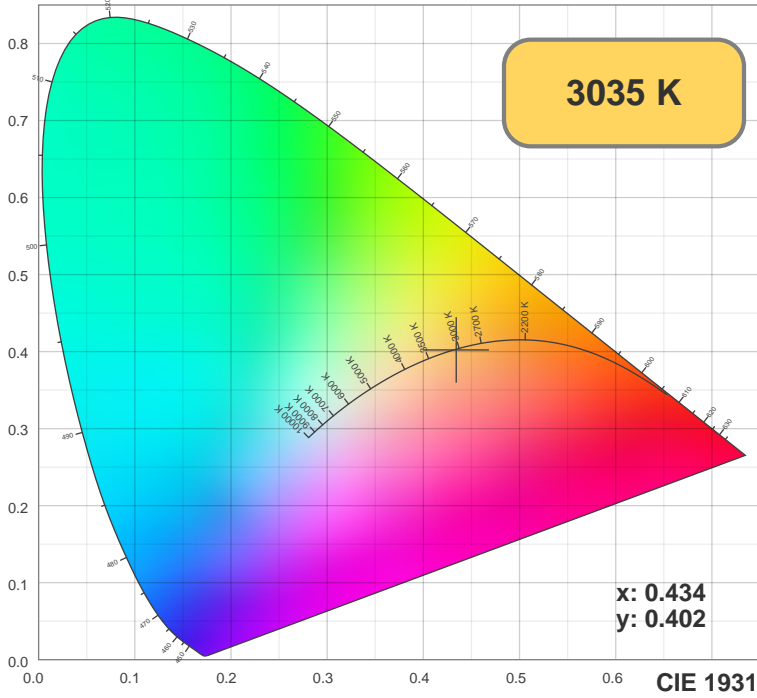
Color



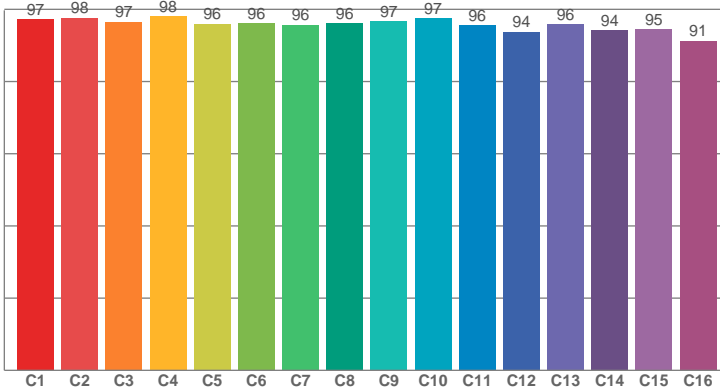
CIE1931  
x: 0.434  
y: 0.402

Spectra

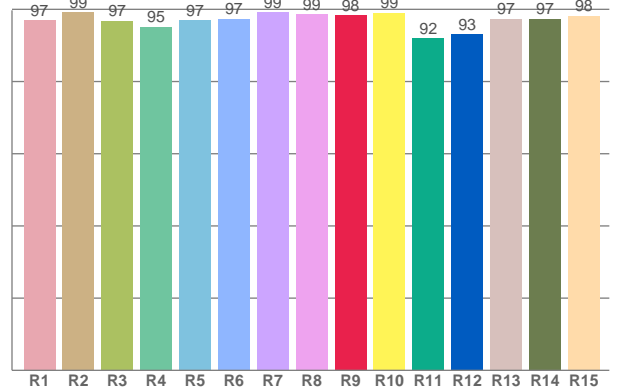




TM30: 96.1



CRI: 97.5 (R1-R8)



CRI R values, only R1-R8 are used to calculate final CRI value

R1	R2	R3	R4	R5	R6	R7	R8	R9	R10	R11	R12	R13	R14	R15
96.94	99.18	96.78	95.12	97.01	97.32	99.10	98.64	98.35	98.98	91.89	93.08	97.32	97.38	98.15

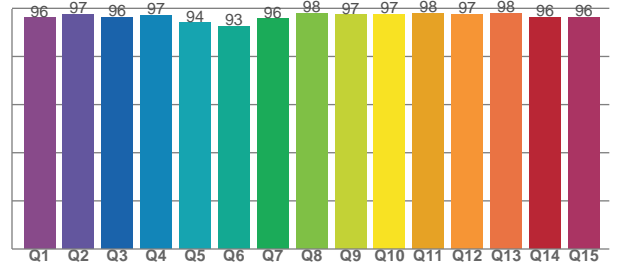
TM30 C values, 16 binned values out of total of 99 C values

C1	C2	C3	C4	C5	C6	C7	C8	C9	C10	C11	C12	C13	C14	C15	C16
97.17	97.61	96.54	98.09	95.98	96.08	95.69	96.07	96.61	97.45	95.51	93.72	95.90	94.20	94.52	91.31

CQS Q values

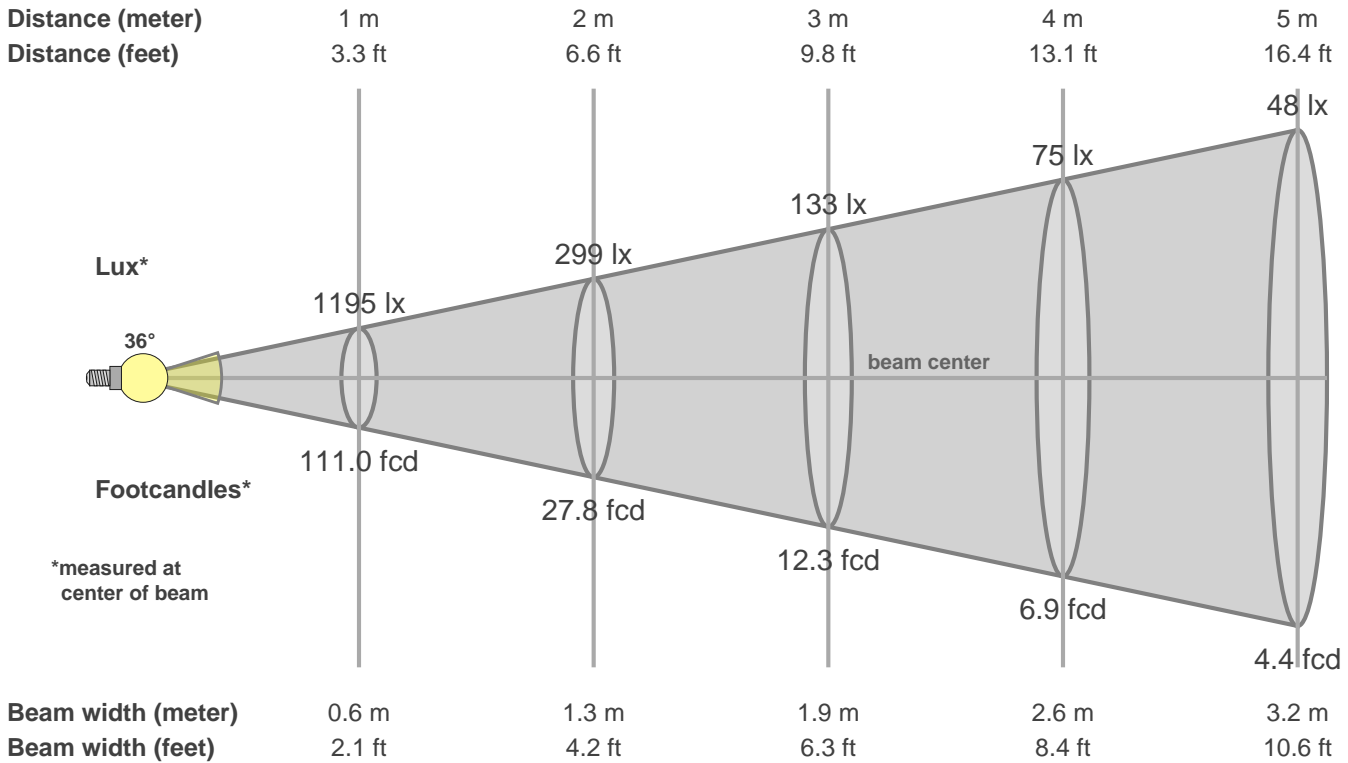
Q1	Q2	Q3	Q4	Q5	Q6	Q7	Q8	Q9	Q10	Q11	Q12	Q13	Q14	Q15
96.07	97.48	96.26	97.06	93.94	92.59	95.62	97.97	97.25	97.48	97.79	97.43	97.91	96.40	96.37

CQS: 96.0



Color parameters

CCT	CRI	CRI R9	TM30 Rf	TM30 Rg	CQS	x	y	u	v	Duv
3035 K	97.5	98.4	96.1	102.3	96.0	0.4	0.4	0.2	0.3	0.0004



**Intensities in 0° c-plane**

0°	2°	4°	6°	8°	10°	12°	14°	16°	18°	20°	22°	24°	26°	28°	30°	32°	34°	36°	38°
1195	1183	1158	1118	1065	1002	931	856	769	668	558	469	374	302	245	195	153	124	101	83
100%	99%	97%	94%	89%	84%	78%	72%	64%	56%	47%	39%	31%	25%	21%	16%	13%	10%	8%	7%

**Intensities in 90° c-plane**

0°	2°	4°	6°	8°	10°	12°	14°	16°	18°	20°	22°	24°	26°	28°	30°	32°	34°	36°	38°
1195	1184	1155	1106	1043	963	864	747	620	495	380	285	210	157	121	98	83	74	67	62
100%	99%	97%	93%	87%	81%	72%	62%	52%	41%	32%	24%	18%	13%	10%	8%	7%	6%	6%	5%

**Intensities in 180° c-plane**

0°	2°	4°	6°	8°	10°	12°	14°	16°	18°	20°	22°	24°	26°	28°	30°	32°	34°	36°	38°
1195	1190	1164	1126	1077	1018	947	866	776	663	564	458	371	304	240	191	155	126	101	82
100%	100%	97%	94%	90%	85%	79%	72%	65%	55%	47%	38%	31%	25%	20%	16%	13%	11%	8%	7%

**Intensities in 270° c-plane**

0°	2°	4°	6°	8°	10°	12°	14°	16°	18°	20°	22°	24°	26°	28°	30°	32°	34°	36°	38°
1195	1189	1162	1117	1054	972	869	750	621	494	381	286	211	157	120	96	81	71	64	59
100%	99%	97%	93%	88%	81%	73%	63%	52%	41%	32%	24%	18%	13%	10%	8%	7%	6%	5%	5%

Beam angle 50%	Field angle 10%	Cutoff angle 2.5%	Intensity ratio in 120° cone	Intensity ratio in 90° cone
35.7°	62.5°	120.4°	92.8%	84.5%