

DEEP REGRESS BAFFLE WALL GRAZER

■ 812 LED-PH ■ 812 LED-SH ■ 812 LED-IH

Multi-lamp, solid state light engine, recessed linear wall grazer / uplight with nominal 1.75" (45mm) wide aperture parabolic baffle and aperture lens. Narrow profile wall grazing used in wall heights up to 12 feet to highlight the texture in surfaces such as stucco or brick

SPECIFICATIONS

HOUSING

- Extruded aluminum housing

MOUNTING

- Recessed in sheetrock/plaster ceiling, surface or uplight

ELECTRICAL

- Integral dimmable electronic driver with internal short circuit protection
- 120v-277v primary, compatible with 0-10v dimmers
- Also available for phase control

LAMP

- 2 watt LED 2" (50mm) o.c. supplied with fixture

SOCKET

- Circuit board mounted to extruded aluminum heatsink
- Inline connectors allow removal and replacement

TRIM

- Parabolic louver baffle

LENS

- Diffusing lens see below for standard options
- Consult factory for additional options

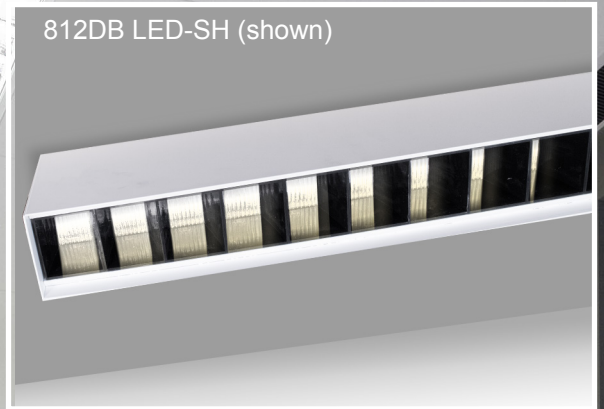
FINISH

- Powder paint on all surfaces
- Additional colors and RAL palette available
- Consult factory for custom finishes

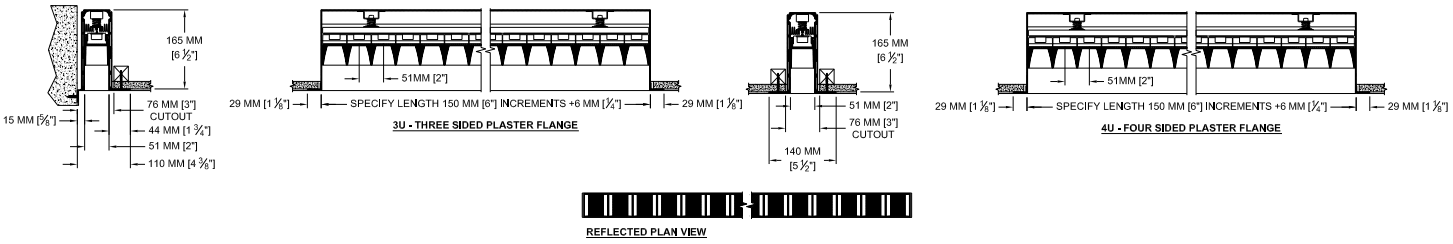
LABELS

- CSA-C,US, Damp location

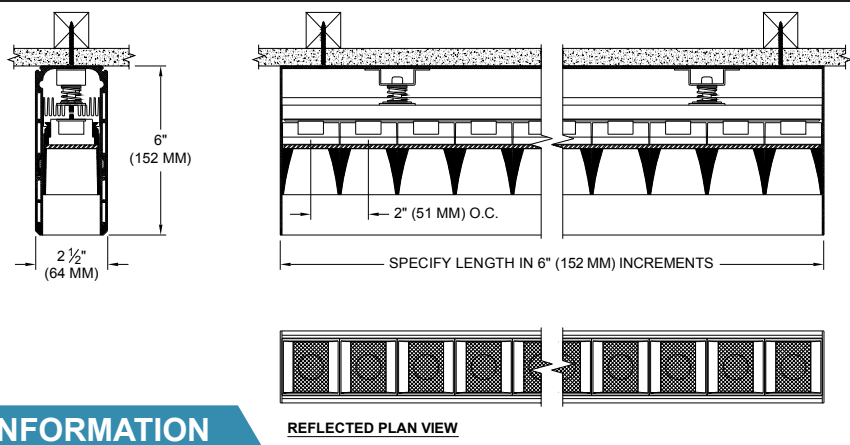
812DB LED-SH (shown)



812DB-LED-PH



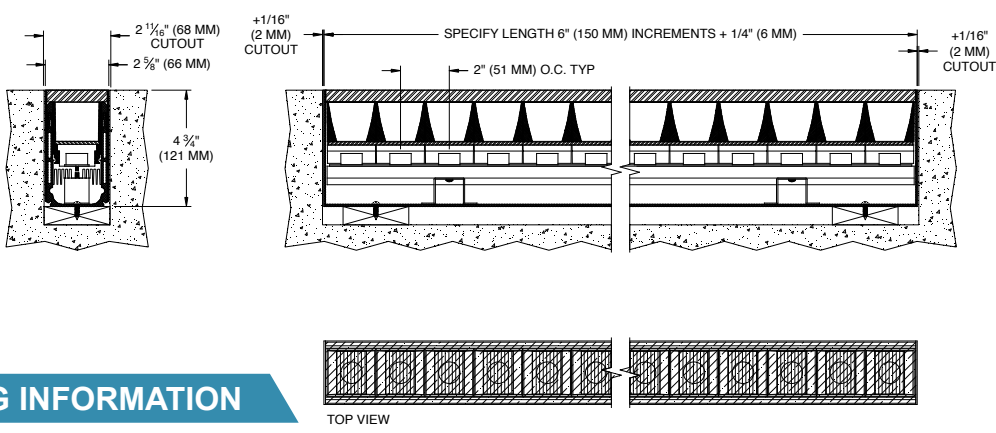
812DB-LED-SH



ORDERING INFORMATION

	HOUSING	LENGTH	DRIVER	HOUSING/LOUVER	APERTURE LENS	ACCESSORY
	812-LED-			/		
PH	Plaster / Surface Housing 8 = 80CRI 27 = 2700K 30 = 3000K 35 = 3500K	Specify exact length in increments of 6" (150mm).	UN3=120-277v 0-10v UN5=120-277v 0-10v 1232W=120v HE 2 wire 1252W=120v HO 2 wire LTRN3=120-277v. 3 wire	WHT = White BLK = Black PXX = SLI Color XXXX= RAL Color CST = Custom	79A = Veiling Acrylic 82A = Frosted Supertex 91A = Solite 92A = Supertex	3U = 3 side ultrim (*PH Only)
SH	4U = 4 side ultrim (*PH Only)					

812DB-LED-IH



ORDERING INFORMATION

	HOUSING	LENGTH	DRIVER	HOUSING/LOUVER	APERTURE LENS	WALKOVER LENS
	812DB-LED-IH			/		
	In-Floor Housing 8 = 80CRI 27 = 2700K 30 = 3000K 35 = 3500K	Specify exact length in increments of 6" (150mm).	UN3=120-277v 0-10v UN5=120-277v 0-10v 1232W=120v HE 2 wire 1252W=120v HO 2 wire LTRN3=120-277v. 3 wire	WHT = White BLK = Black PXX = SLI Color XXXX = RAL Color CST = Custom	79A= Veiling Acrylic 82A= Frosted Supertex 91A= Solite 92A= Supertex	CP84 = Res Clear CP87 = Comm Clear SP84 = Res Frosted SP87 = Comm Frosted

*Integral driver requires minimum length of 2' (610mm)