

JOB: _____
 SPECIFIER: _____
 TYPE: _____
 QUANTITY: _____
 SIGNATURE: _____

Lighting Track System

3-Circuit Control

- Energy savings-certain lights can be dimmed or shut-off while others illuminate products
- Enhanced merchandising-attention can be focused on select products

Quality Construction

- ISO 9001
- Rigid aluminum profile
- High quality powder coat finish
- Custom colors available
- Curved track available

Simplified installation

- Surface mounting with easy to use mounting clips or direct mounting to ceiling through pre-drilled screw holes
- Feedable L, T and X-connectors simplify installation, particularly with

Oversized Conductors

- Higher operating safety
- Reduced overload potential

Secure Bus Bar Insulation

- Insulation is firmly crimped in place to prevent movement of the conductors or the insulation for the life of product

Separate Mechanical Suspension Points

- Superior weight bearing capacity
- Integrity of electrical contacts is maintained, preventing arcing and extending the life of fixtures and lamps

Open Architecture™

- Widely available throughout the world, the GLOBAL Trac system accommodates an extensive variety of fixtures without risk of obsolescence

GLOBAL-TRAC™ pro by NORDIC-ALUMINIUM provides a specification grade track platform for mounting high quality fixtures. The heavy duty extruded aluminum profile is ideal for demanding applications where numerous and/or heavy fixtures are needed. In addition to U.L., Nordic lighting track is approved in numerous countries around the world, a valuable feature for both domestic and international projects. Produced in an ISO 9001 registered factory, the product has a long-standing reputation for arriving at the job site on-time and defect-free.

When the ultimate level of control is required, GLOBAL *pro*™ 3-cct track provides the solution. Three circuits offer endless merchandising and ambiance creation opportunities. Certain fixtures can be dimmed or shut-off while others can be set to intensely illuminate objects. Attention can be drawn to certain products or exhibits, a desired effect can be created through multiple-circuit dimming, or all fixtures can be powered for maximum illumination. Maximum control and reduced energy costs make GLOBAL *pro*™ an excellent choice.

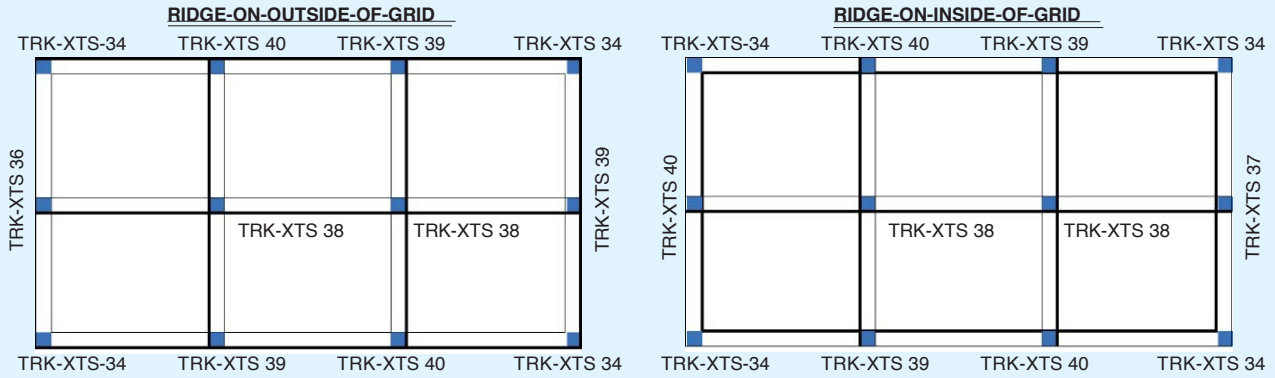
Track and Accessories / System Configuration

<p>SURFACE MOUNT XTS 48 XTS 96 XTS 144</p>	<p>TRK-XTS 11</p> <p>TRK-XTS 12</p>	<p>TRK-XTS 23</p> <p>TRK-XTS 24</p>	<p>TRACK</p> <p>TRK 48 4 ft. track section, surface mount TRK 96 8 ft. track section, surface mount TRK 144 12 ft. track section, surface mount TRK CST Custom track section, surface mount</p>
<p>TRK-XTSA 71</p> <p>TRK-XTSA 70</p> <p>TRK-XTSA 66</p> <p>TRK-XTSA 68</p>	<p>TRK-GES 15</p> <p>TRK-XTSAJ 10</p> <p>TRK-XTS 41</p> <p>TRK-XTS 21</p> <p>TRK-XTAK 14</p> <p>TRK-XTAK 11</p>	<p>TRK-XTS 34</p> <p>TRK-XTS 39</p> <p>TRK-XTS 40</p> <p>TRK-XTS 38</p>	<p>ACCESSORIES</p> <p>TRK-FTP 41 Recess hardware TRK-XTS 11 End Feed TRK-XTS 12 End Feed, mirror image TRK-XTS 14 Center Feed TRK-XTS 21 Straight connector TRK-XTSAJ 10 Vertical conduit feed adapter TRK-GES 15 J-box cover for feeds TRK-XTS 23 Flexible connector TRK-XTS 24 Adjustable L-connector TRK-XTS 34 L-connector, outside corner (feedable) TRK-XTS 38 X-connector (feedable) TRK-XTS 39 T-connector, inside (feedable) TRK-XTS 40 T-connector, outside (feedable) TRK-XTS 41 End Cap TRK-XTAK14 Hook base TRK-XTAK 11 Hook TRK-XTSA 70 Monopoint, surface mount TRK-XTSA 71 Recessed housing for monopoint TRK-XTSA 66 Low profile 3-cct switchable adapter TRK-XTSA 68 MULTI-adapter™ 3-cct switchable adapter</p>

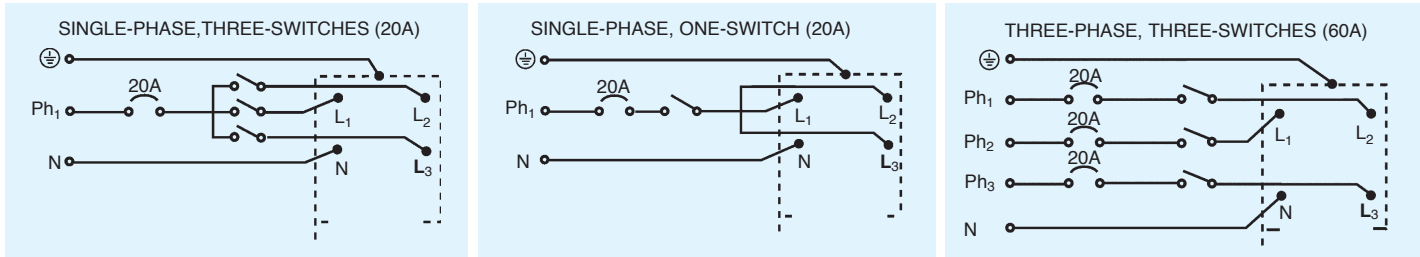
Color codes for ordering: Track: White -3 Black -2 Aluminum -1 Examples: Black 4 ft. track: XTS 44-2
 Accessories: White -3 Black -2 White end feed: XTS 11-3

Polarity Diagrams

The track is polarized, and therefore direction sensitive, so care must be taken when selecting the connecting pieces. The track has a raised ridge on one side to ensure proper polarity connection. The following diagrams illustrate the selection of L and T connectors.



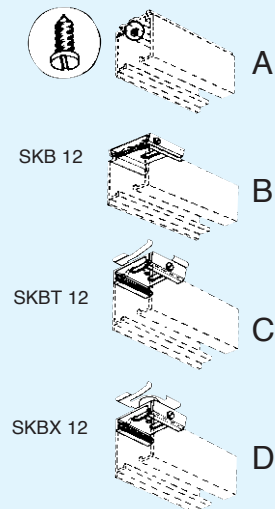
Electrical



Mounting Techniques and Hardware

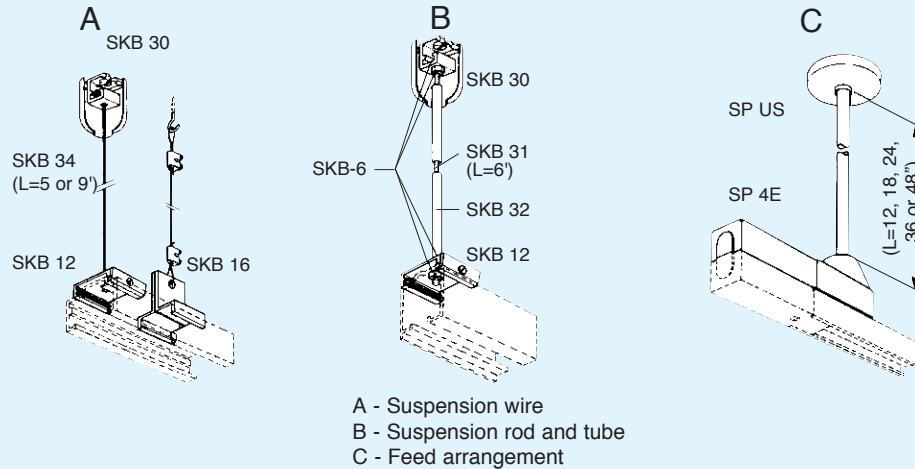
The illustrations below are typical examples only. Other mounting hardware is also available.

SURFACE MOUNTING



- A - Screw mount (track is pre-drilled)
- B - Ceiling clamp
- C - T-Bar ceiling clamp
- D - Recessed T-Bar ceiling clamp

SUSPENSION



- A - Suspension wire
- B - Suspension rod and tube
- C - Feed arrangement

Track Length and Field Cutting

The track is available in exact 4 ft., 8 ft. and 12 ft. lengths. It can also be field-cut to desired length. After cutting, the conductors must be bent using the XTSV 12 bending tool shown at left. Consult the installation instructions for directions.

