

Multi-lamp, low voltage halogen, recessed linear wall washer with nominal 5" (125mm) wide aperture, adjustable socket plate, optional baffle and borosilicate supertex spread lens.

TYPE: _____

JOB: _____

SPECIFIER: _____

SPECIFICATIONS

HOUSING - Heavy gauge extruded aluminum (material of corrosion resistant alloy.) Aluminum end plate.

MOUNTING - Recessed in architectural ceiling

ELECTRICAL - Fixture comes with terminal block for connection to remote transformer. Transformer should be sized for the run length and ordered separately

LAMP - MR-16 spot, 37w max. supplied by others. Maximum 74watts per linear foot

LABELS - LABELS - UL, C-UL, Damp location, Wet w/ LC

SOCKET - Precision die formed aluminum socket plate. G-4/G-6 with 250°C 600v Teflon coated lead wires.

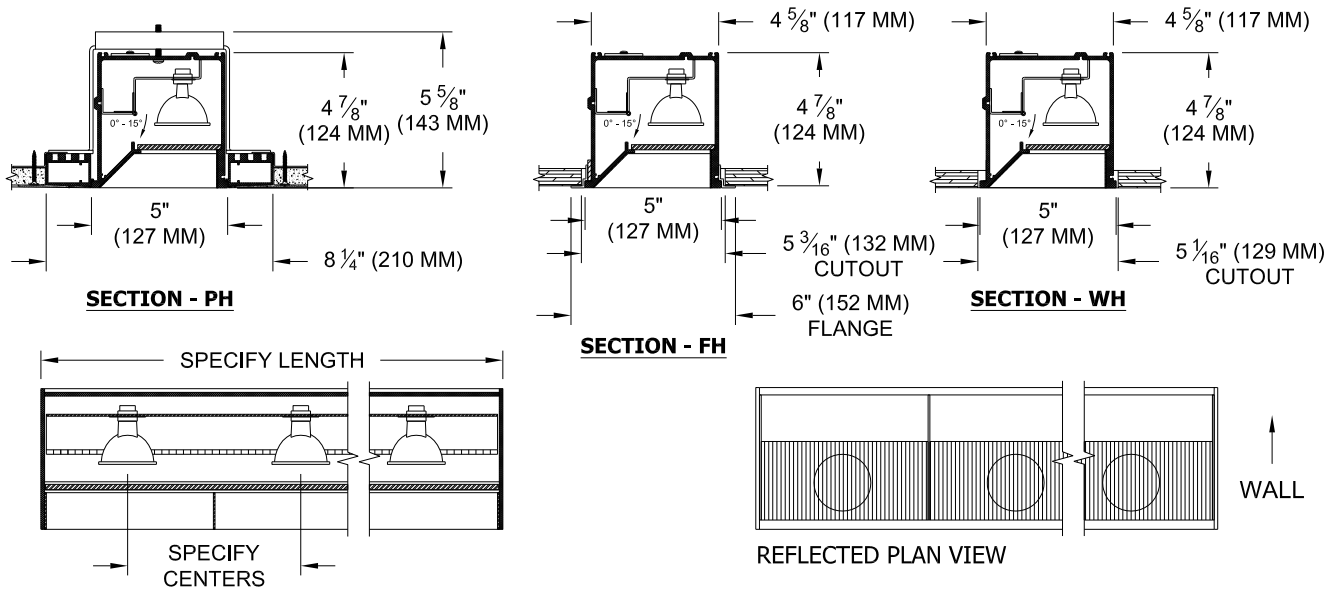
LENS - Supertex borosilicate glass. Others available consult factory

TRIM - Regress trim integral to housing

FINISH - Powder paint on all surfaces in black and white as standard. Additional colors and RAL palette available. Consult factory for custom finishes

APPLICATIONS

Large profile, recessed, intended to wall graze / wash down walls and other flat surfaces by positioning the trim of the fixture housing near the surface to be illuminated.



ORDERING INFORMATION

HOUSING	LENGTH	TRANSFORMER	LAMP SPACING	FINISH	APERTURE LENS	OPTIONS
819-MR16-__						
Housing PH = Plaster/Ultrim FH = Flanged WH = Wood	Specify exact length required	RX = Remote	4= 4" 6 = 6" 8 = 8" CST = Custom	WHT = White BLK = Black PXX = SLI Color XXXX = RAL # CST = Custom	82A = Frosted Supertex 92A = Supertex	BFL = Blade Baffles LC = Lens Clips

This information is provided as a specification aid. A submittal will be prepared by the manufacturer for approval prior to fabricating this product.



SPECIALTY LIGHTING INDUSTRIES, INC.

NOTE: These specifications subject to change without notice.

www.specialtylightingindustries.com

1306 DORIS AVENUE, OCEAN, NJ 07712 USA 800.462.7812 732.517.0800 FAX 732.517.0971 ©09/14