

Multi-lamp, solid state light engine, recessed linear wall grazer with flangless housing, nominal 2" (51mm) wide aperture parabolic baffle and aperture lens. Narrow profile wall grazing downlight used in wall heights up to 12 feet (3.5m) to highlight the texture in surfaces such as stucco or brick, illuminate flat surfaces such as venetian plaster, wood, or specular surfaces such as polished stone or stainless steel.

## SPECIFICATIONS

### HOUSING

- Extruded aluminum housing with integral plaster frame

### MOUNTING

- Recessed in sheetrock or plaster ceiling

### ELECTRICAL

- Integral dimmable electronic driver with internal short circuit protection.
- 120v-277v primary, compatible with 0-10v dimmers.
- Also available for 120v phase control and Lutron

### LAMP

- 2 watt LED 2" (50mm) o.c. supplied with fixture

### SOCKET

- Circuit board mounted to extruded aluminum heatsink
- Inline connectors allow removal and replacement

### LENS

- Acrylic diffusing lens. Others available consult factory

### TRIM

- Parabolic louver baffle

### FINISH

- Housing available in white as standard
- Louver available in black or white as standard
- Additional standard colors, RAL palette, custom finishes available

### LABELS

-  , US tested to UL standards 1598, Damp location

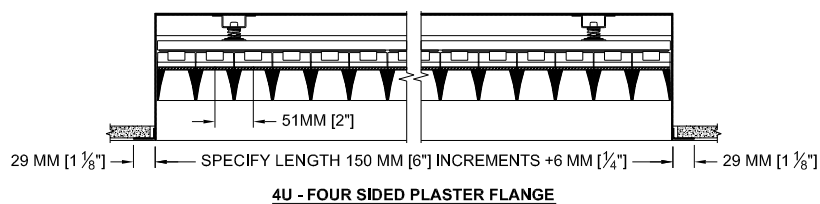
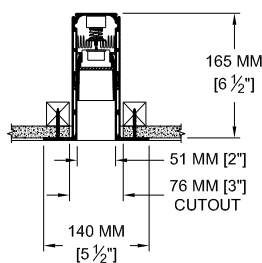
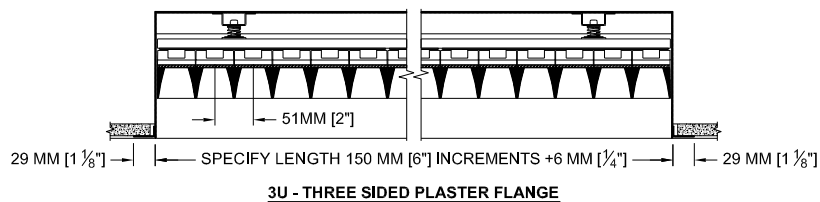
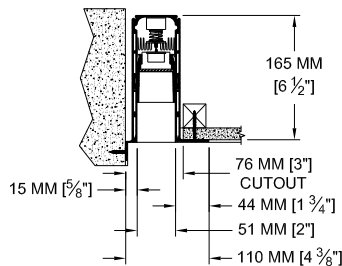
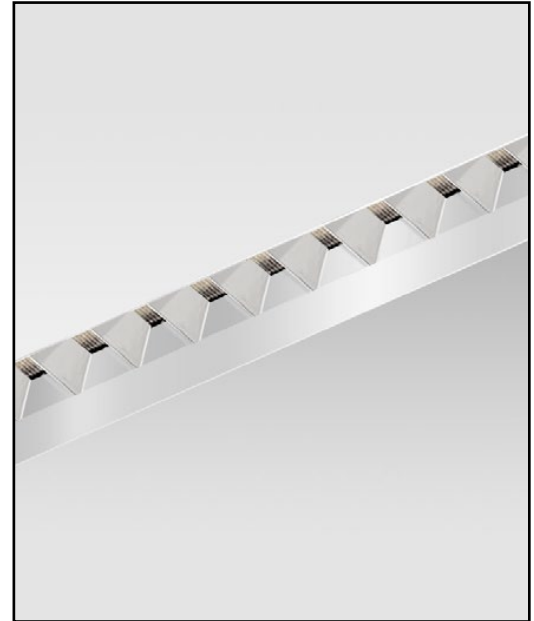
**JOB:** \_\_\_\_\_

**SPECIFIER:** \_\_\_\_\_

**TYPE:** \_\_\_\_\_

**QUANTITY:** \_\_\_\_\_

**SIGNATURE:** \_\_\_\_\_



## ORDERING INFORMATION

812-LEDP-PH	LENGTH	DRIVER	HOUSING / LOUVER	APERTURE LENS	ACCESSORIES
Plaster Housing 827 = 2700K 80CRI 830 = 3000K 80CRI 835 = 3500K 80CRI	Specify exact length in increments of 6" (150 mm) Minimum 24" for integral driver	UN3 = 120v-240v HE UN5 = 120v-240v HO above for 0-10v control 1232W = 120v HE 2 wire 1252W = 120v HO 2 wire LT3 = 120-277v Lutron 3 wire	P14 = White BLK=Black PXX = SLI Color CST = Custom	79A = Veiling Acrylic 81A = Frosted Solite 91A = Solite 92A = Supertex	U3 = 3 Side Ultrim U4 = 4 Side Ultrim



Patent Pending.  
These specifications subject to change without notice.

[www.specialtylightingindustries.com](http://www.specialtylightingindustries.com)  
1306 Doris Avenue, Ocean, NJ 07712 USA  
800.462.7812 732.517.0800 FAX:732.517.0971