

Multi-lamp, solid state light engine, in-ground deep baffle wall grazer, nominal 2" (50mm) wide aperture parabolic baffle and regressed acrylic lens. Narrow profile wall grazing upright used in wall heights up to 10 feet (3m) to highlight the texture in surfaces such as stucco or brick, illuminate flat surfaces such as fabric or wood, or specular surfaces such as polished stone or stainless steel.

SPECIFICATIONS

HOUSING

- Extruded aluminum housing with bolt on end plates

MOUNTING

- Recessed in floor

ELECTRICAL

- Integral dimmable electronic driver with internal short circuit protection.
- 120v-277v primary, compatible with 0-10v dimmers.
- Also available for 120v phase control. Consult factory for other drivers.

LAMP

- 2 watt LED 2" o.c. supplied with fixture

SOCKET

- Circuit board mounted to extruded aluminum heatsink
- Inline connectors allow removal and replacement

LENS

- Pyrex walkover lens for residential or commercial applications
- Acrylic diffusing lens

TRIM

- Parabolic louver baffle

FINISH

- Housing available in white as standard
- Louver available in black or white as standard
- Additional standard colors, RAL palette, custom finishes available

LABELS

-  , US tested to UL standards 1598, Damp location, **TITLE 24** JA8 Approved

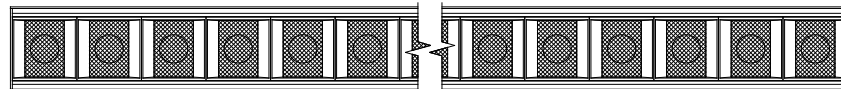
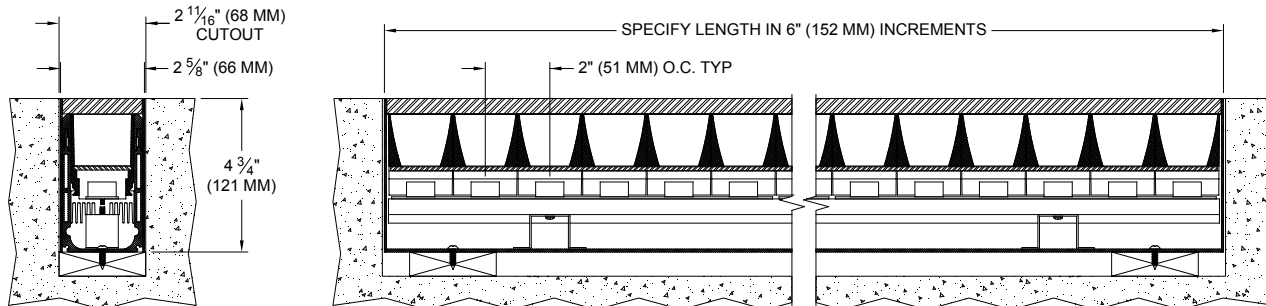
JOB: _____

SPECIFIER: _____

TYPE: _____

QUANTITY: _____

SIGNATURE: _____



TOP VIEW

ORDERING INFORMATION

811DB-LED-IH	LENGTH	SOURCE / DRIVER	HOUSING / LOUVER	APERTURE LENS	WALKOVER LENS
		/	/		
In-Ground Housing 8 = 80 CRI • 27 = 2700K 9 = 90+CRI • 30 = 3000K 35 = 3500K 40 = 4000K	Specify exact length in increments of 6" (150 mm) Minimum 2' for integral driver	*UN3 = 120v-277v, 0-10v Dim. 9W/ft 600lm/ft (nom.) *UN5 = 120v-277v, 0-10v Dim. 12W/ft 700lm/ft (nom.) *Add L2, LTB for Lutron 2 wire, Lutron Fade-to-Black L2 = 120v, Lutron Hi-lume 1% 2-wr LED driver 9W/ft 1100lm/ft (nom.) LTB = 120-277v, Fade-to-Black Lutron Hi-lume 1% digital EcoSystem driver 12W/ft 700lm/ft (nom.)	WHT = White BLK = Black PA = Clear Aluminum PXX = SLI Color CST = Custom	79A = Veiling Acrylic 82A = Frosted Supertex	CP84 = Res Clear CP87 = Comm Clear SP84 = Res Frosted SP87 = Comm Frosted

• California Title 24- JA8 Approved



Patent Pending.
 These specifications subject to change without notice.

www.specialtylightingindustries.com
 1306 Doris Avenue, Ocean, NJ 07712 USA
 800.462.7812 732.517.0800 FAX: 732.517.0971