

Multi-lamp, solid state light engine, surface mounted linear wall grazer. Nominal 2" (50mm) wide aperture and regressed acrylic lens. Narrow profile wall grazer used in low ceiling heights to highlight the texture in surfaces such as stucco or brick, illuminate flat surfaces such as venetian plaster, fabric or wood, or specular surfaces such as polished stone or stainless steel.

## SPECIFICATIONS

### HOUSING

- Extruded aluminum with seamless welded and ground end plates

### MOUNTING

- Surface mounted

### ELECTRICAL

- Integral dimmable electronic driver with internal short circuit protection

### LAMP

- 2 watt LED supplied with fixture

### SOCKET

- Circuit board mounted to extruded aluminum heatsink
- Inline connectors allow removal and replacement

### LENS

- Acrylic diffusing lens. Others available consult factory


### TRIM

- Lens frame integral to housing

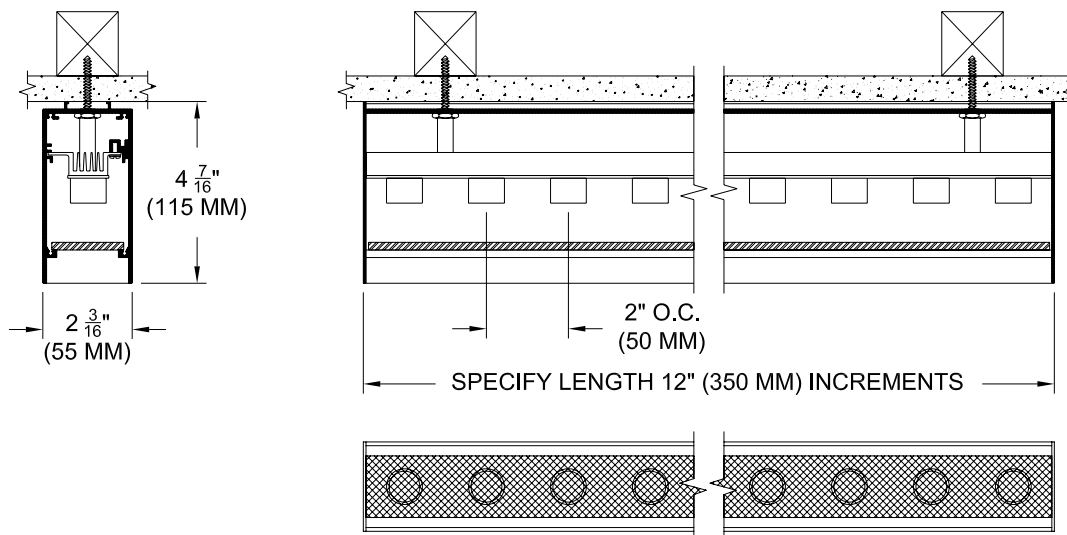
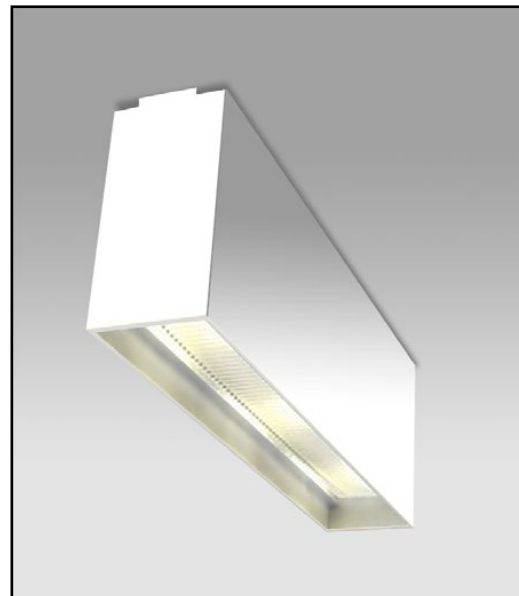
### FINISH

- Powder paint on all surfaces in black and white as standard
- Additional colors and RAL palette available
- Custom finishes available

### LABELS

-  US tested to UL standards 1598, Damp location

JOB: \_\_\_\_\_  
 SPECIFIER: \_\_\_\_\_  
 TYPE: \_\_\_\_\_  
 QUANTITY: \_\_\_\_\_  
 SIGNATURE: \_\_\_\_\_



## ORDERING INFORMATION

REFLECTED PLAN VIEW

804-LED-SH	LENGTH	SOURCE / DRIVER	FINISH	APERTURE LENS
		/		
Surface Housing 8 = 80 CRI 27 = 2700K 9 = 90+CRI 30 = 3000K 35 = 3500K	Specify exact length in increments of 12" (300 mm) Min. 2' required for integral driver	UN2** = 120v-277v, 0-10v Dim. 9W/ft 1100lm/ft (nom.) UN3 = 120v-277v, 0-10v Dim. 9W/ft 600lm/ft (nom.) UN5 = 120v-277v, 0-10v Dim. 12W/ft 700lm/ft (nom.) *Add L2, LTB for Lutron 2 wire, Lutron Fade-to-Black L2 = 120v, Lutron Hi-lume 1% 2-wr LED driver 9W/ft 1100lm/ft (nom.) LTB = 120-277v, Fade-to-Black Lutron Hi-lume 1% digital EcoSystem driver 12W/ft 700lm/ft (nom.)	WHT = White BLK = Black PXX = SLI Color XXXX = RAL # CST = Custom	79A = Veiling Acrylic 91A = Solite

\*\*UN2 for use with 90+CRI