

Multilamp halogen low voltage surface mounted linear wall grazer with nominal 2" wide aperture and regressed borosilicate supertex spread lens. Narrow profile wall grazer used in low to medium ceiling heights to highlight the texture in surfaces such as stucco or brick, illuminate flat surfaces such as venetian plaster, or wood, or light specular surfaces such as polished stone or stainless steel.

SPECIFICATIONS

HOUSING

- Extruded aluminum with seamless welded and ground end plates

MOUNTING

- Surface mounted

ELECTRICAL

- Fixture comes with wiring access plate with knockouts for connection to remote transformer
- Transformer should be sized for the run length and ordered separately

LAMP

- ALR-12 (GBD), MR-11 (FSS) narrow spot 20w max. supplied by others

SOCKET

- Precision die formed aluminum socket plate
- G4/G6 ceramic socket or nickel plated steel double contact bayonet base with stainless steel spring for optimum contact
- High temperature lead wires

LENS

- Supertex borosilicate glass. Others available consult factory


TRIM

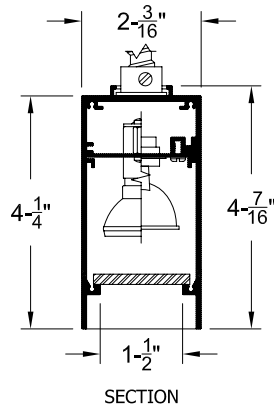
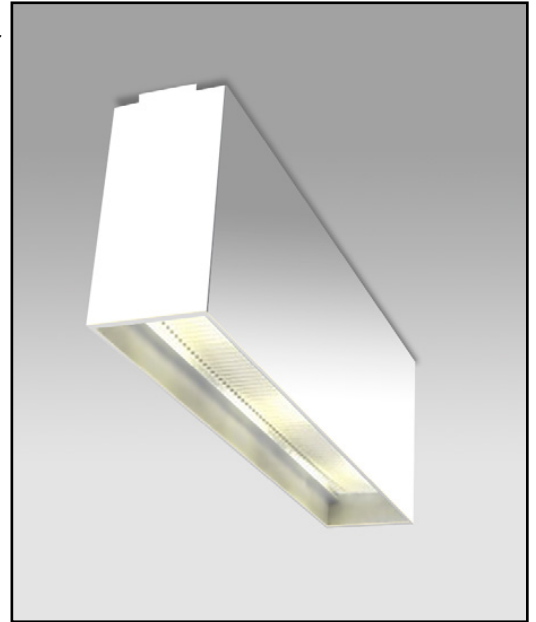
- Lens frame integral to housing

FINISH

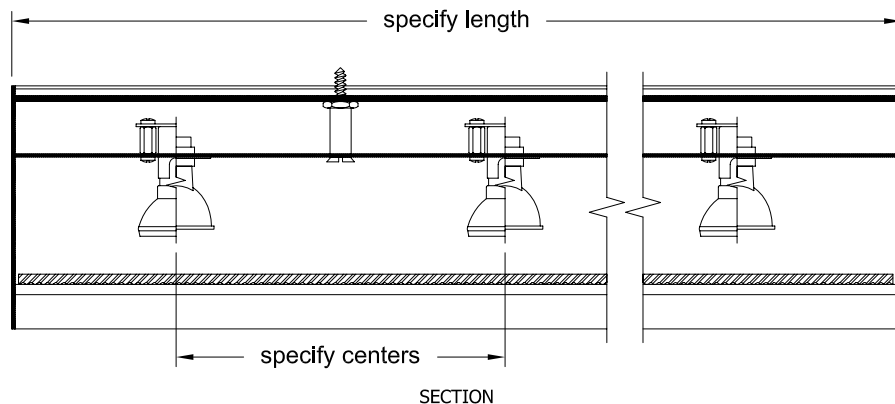
- Powder paint on all surfaces in black and white as standard
- Additional colors and RAL palette available
- Custom finishes available

LABELS

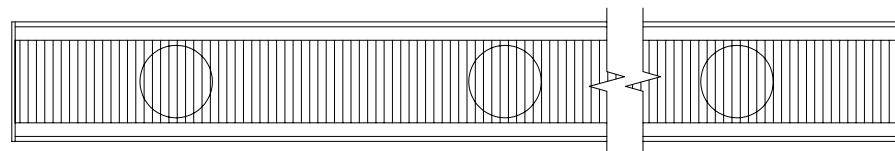
-  , US tested to UL standards 1598, Damp location



SECTION



SECTION



REFLECTED PLAN VIEW

ORDERING INFORMATION

804-__-SH	LAMP SPACING	LENGTH	TRANSFORMER	FINISH	APERTURE LENS
			RX		
Surface Housing MR = MR11 Lamp ALR = ALR12 Lamp	4 = 4" 6 = 6" or custom spacing	Specify exact length in increments of 12" (300mm)	RX = Remote	P14 = White BLK=Black PXX = SLI Color XXXX = RAL # CST = Custom	91A = Solite 92A = Supertex 93A = Sandblasted 95A = Full Prismatic