

TYPE: _____

JOB: _____

SPECIFICATIONS

HOUSING - Heavy gauge extruded aluminum (material of corrosion resistant alloy.)
Welded aluminum end plate, no visible seam.

ELECTRICAL - MR-16, remote transformer required, sold separately.

SOCKET - Precision die formed aluminum socket plate. G-4/G-6 with 250°C 600v Teflon coated lead wires.

MOUNTING - Recessed in concrete.

LABELS - UL, C-UL -Dry Location.

LAMP - MR-16, 12v (narrow spot recommended) - by others.

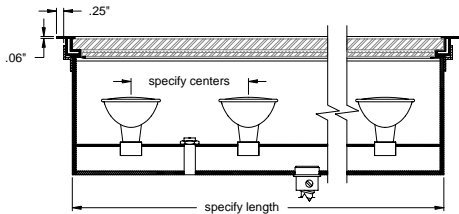
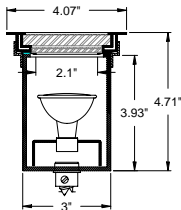
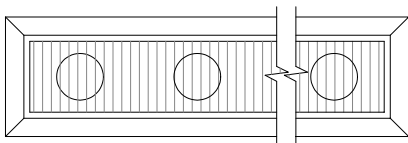
LENS - Supertex borosilicate glass and 3/8" clear Pyrex protective cover. Others available consult factory.

FRAME - Removable for relamping.

FINISH - Black painted housing. Powder paint on frame. RAL colors standard, consult factory for custom finishes.

APPLICATIONS

Small profile, recessed in concrete, intended to highlight surface texture in brick, stone, stucco, tile, textured paint, fabric and wood panels. For installation in poured concrete.



ORDERING INFORMATION

FIXTURE	LAMP	LAMP SPACING	LENGTH	FINISH
#802UP/C				
Recessed in concrete linear wall grazing system uplight	20MR-16 = 12v, 20w 37MR-16 = 12v, 37w (maximum 74w per foot)	4 = 4" 6 = 6" 8 = 8"	specify exact length	WHT = White BLK = Black XXXX = RAL # CST = Custom (must supply chip)



**SPECIALTY LIGHTING
INDUSTRIES, INC.**

www.specialtylightingindustries.com

1306 DORIS AVENUE, OCEAN, NJ 07712 USA

800.462.7812

732.517.0800

FAX 732.517.0971