

Multi-lamp, low-voltage halogen, recessed linear light slot with flanged housing, nominal 2.5" (60mm) wide aperture and borosilicate aperture lens. May be used as a wall grazer or a general down light.

TYPE: _____

JOB: _____

SPECIFIER: _____

SPECIFICATIONS

HOUSING - Extruded aluminum housing with integral flange.

MOUNTING - Recessed in architectural ceiling.

ELECTRICAL - Fixture comes with terminal block for connection to power supply. Remote transformer should be sized for the run length and ordered separately.

LAMP - ALR-12 (GBD) 20w, MR-16 spot, 37w max. supplied by others. Maximum 74w/linear foot

LABELS - UL, C-UL, Wet location with ST Trim

SOCKET - Precision die-formed aluminum socket plate. G4/G6 ceramic socket or nickel plated steel double contact bayonet base with stainless steel spring for optimum contact. High temperature lead wires.

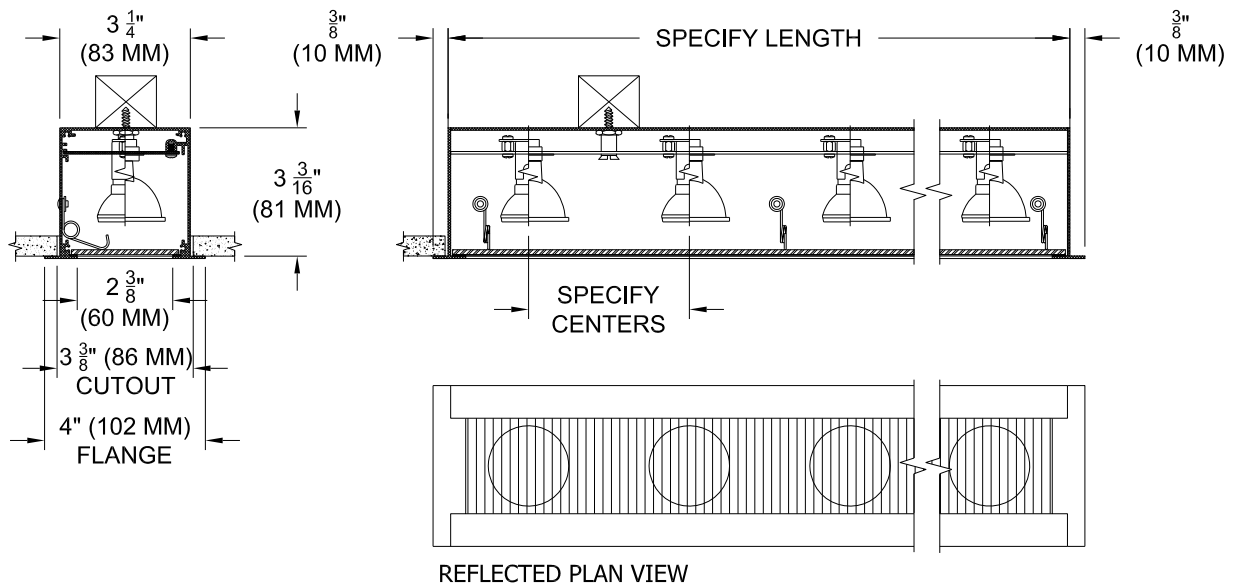
LENS - Supertex borosilicate glass for wall grazing, other lenses for down lighting.

TRIM - Integral flange.

FINISH - Black anodized housing. Paint on all surfaces available in white. Additional standard colors and RAL colors available. Consult factory for custom finishes.

APPLICATIONS

Small aperture down light or wall grazer to highlight textured surfaces such as stucco or brick or illuminate flat surfaces such as stone or metal. ST trim used in showers or other wet locations. LC used in high vibration applications such as elevator cabs.



ORDERING INFORMATION

HOUSING	LENGTH	LAMP SPACING	TRANSFORMER	FINISH	APERTURE LENS	ACCESSORIES
802-___-FH			RX			
Flanged housing ALR = ALR 12 lamp MR = MR 16 lamp	Specify exact length	4 = 4" (100mm) 6 = 6" (150mm) or custom spacing	RX= Remote	WHT = White BLK = Black PXX = SLI Color XXXX = RAL # CST = Custom	82 = Frosted Supertex 91 = Solite 92 = Supertex 93 = Frosted 95 = Full Prismatic	LC = Lens Clip ST = Shower Trim

This information is provided as a specification aid. A submittal will be prepared by the manufacturer for approval prior to fabricating this product.



SPECIALTY LIGHTING INDUSTRIES, INC.

NOTE: These specifications subject to change without notice.

www.specialtylightingindustries.com

1306 DORIS AVENUE, OCEAN, NJ 07712 USA 800.462.7812 732.517.0800 FAX 732.517.0971 ©03/12