

TYPE: _____

JOB: _____

SPECIFICATIONS

HOUSING - Heavy gauge extruded aluminum (material of corrosion resistant alloy.)
Welded aluminum end plate, no visible seam.

REFLECTOR - Semi-specular, low iridescence, aluminum.

ELECTRICAL - T4/DC, 120v.

SOCKET - Double contact bayonet, 125v 500w, 18ga 600v, 200° C silicone wire.

MOUNTING - Surface, provide proper support.

LABELS - UL, C-UL - Dry Location.

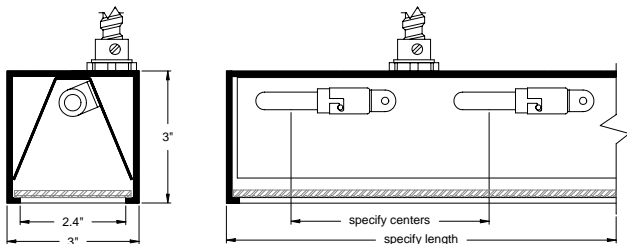
LAMP - T4/DC, 120v, frosted - by others.

LENS - Full prismatic spread lens, others available, consult factory.

FINISH - Powder paint on all surfaces.
RAL colors standard, consult factory for custom finishes.

APPLICATIONS

Small profile, general lighting system. Ideal for vanities and general downlighting.



ORDERING INFORMATION

| FIXTURE | LAMP | LAMP SPACING | LENGTH | FINISH |
|---|----------------------------------|------------------|--|---|
| #700 | | | | |
| Surface mounted linear wall wash system | 20T4 = 20w, 120v, DC base | 5 = 5" 6 = 6" | specify exact length, increments of 6" | WHT = White BLK = Black XXXX = RAL # CST = Custom (must supply chip) |



SPECIALTY LIGHTING
INDUSTRIES, INC.

www.specialtylightingindustries.com

1306 DORIS AVENUE, OCEAN, NJ 07712 USA

800.462.7812

732.517.0800

FAX 732.517.0971