

TYPE: _____

JOB: _____

SPECIFICATIONS

HOUSING - Heavy gauge extruded aluminum (material of corrosion resistant alloy.)
Welded aluminum end plate, no visible seam.

REFLECTOR - Semi-specular, low iridescence, aluminum.

ELECTRICAL - T3, remote transformer required, sold separately.

SOCKET - G-4/G-6 with 250°C 600v Teflon coated lead wires.

MOUNTING - Surface, provide proper support.

LABELS - UL, C-UL -Dry Location.

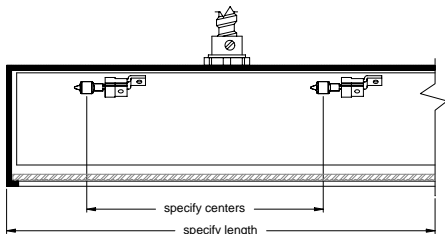
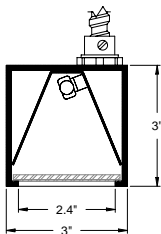
LAMP - T3, 12v - by others.

LENS - Full prismatic spread lens, others available, consult factory.

FINISH - Powder paint on all surfaces.
RAL colors standard, consult factory for custom finishes.

APPLICATIONS

Small profile, general lighting system. Ideal for vanities and general downlighting.



ORDERING INFORMATION

FIXTURE	LAMP	LAMP SPACING	LENGTH	FINISH
#700				
Surface mounted linear general lighting system	20T3 = 20w, 12v, halogen bi-pin	4 = 4" 6 = 6"	specify exact length, increments of 6"	WHT = White BLK = Black XXXX = RAL # CST = Custom (must supply chip)



SPECIALTY LIGHTING
INDUSTRIES, INC.

www. specialtylightingindustries.com

1306 DORIS AVENUE, OCEAN, NJ 07712 USA

800.462.7812

732.517.0800

FAX 732.517.0971