

# SURFACE MOUNTED ELLIPTICAL PICTURE LIGHT

306-LEDP

Multi-lamp, solid state light engine, extruded picture light with nominal 3" (75mm) wide elliptical housing and integral upright shield. Provides smooth even illumination of surfaces up to 12 (4M) feet tall. May be used to light large pieces of art light such as tall painting or murals. May also be used to illuminate shelving or indirectly light ceilings.

## SPECIFICATIONS

### HOUSING

- Extruded aluminum with seamless welded and ground end plates

### MOUNTING

- Cantilevered. See mounting options (Below)

### ELECTRICAL

- Integral electronic driver dimmable with 0-10v or phase control
- 120v primary lead, (220v, 240v, 277v available)
- See mounting options for electrical connections

### LAMP

- 1100 lumens and 9W/ft (300mm) supplied with fixture
- Available in 2700 thru 3000K color temperature and 80+ CRI

### SOCKET

- Circuit board mounted to extruded aluminum heatsink
- Inline connectors allow removal and replacement

### LENS

- Acrylic diffusing lens. Others available consult factory

### TRIM

- Die-cast aluminum tubular shield

### FINISH

- Powder paint available in black and white as standard
- Additional standard colors, RAL palette, custom finishes available

### LABELS

-  US tested to UL standards 1598, Damp location

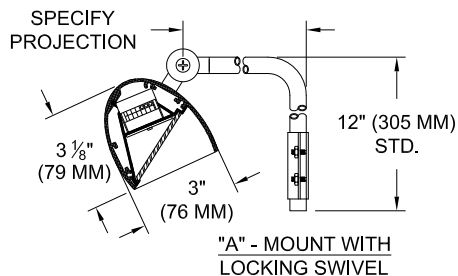
JOB: \_\_\_\_\_

SPECIFIER: \_\_\_\_\_

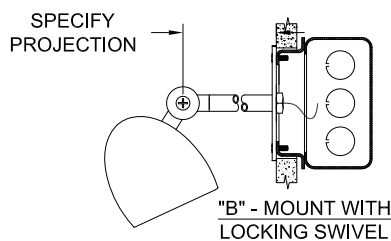
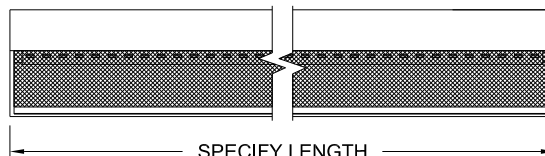
TYPE: \_\_\_\_\_

QUANTITY: \_\_\_\_\_

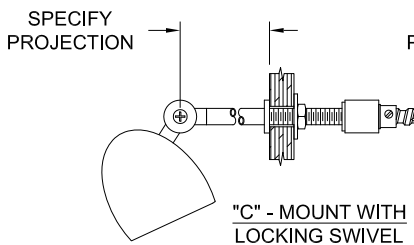
SIGNATURE: \_\_\_\_\_



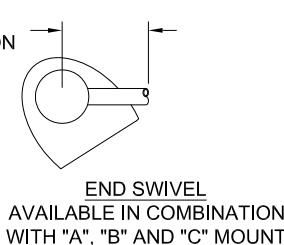
"A" - MOUNT WITH LOCKING SWIVEL



"B" - MOUNT WITH LOCKING SWIVEL



"C" - MOUNT WITH LOCKING SWIVEL



END SWIVEL  
AVAILABLE IN COMBINATION WITH "A", "B" AND "C" MOUNT

## ORDERING INFORMATION

306-LEDP	LENGTH	PROJECTION	DRIVER	MOUNTING	FINISH
Elliptical Picture Light 8 = 80CRI 27 = 2700K 9 = 90+CRI 30 = 3000K 35 = 3500K 40 = 4000K	Specify length in 1' (300mm) increments*  *2' (600mm) minimum for integral driver	3 = 3" (75mm) 6 = 6" (150mm) 9 = 9" (225mm) 12 = 12" (300mm) or custom projection	120 277 UNV (0-10v dimming) *Add DM2 for 2 wire dim *Add LT2 for Lutron 2 wire *Add LT3 for Lutron 3 wire	A = Cord & Plug B = J-Box C = Through Panel E = End Swivel* Available in A,B,C, mount	P14 = White PXX = SLI Color XXXX = RAL # MXX = Metal Finish CST = Custom  <a href="#">Click Here for more Finishes</a>

