

Multi-lamp, low-voltage halogen, extruded picture light with nominal 3 1/2" (89mm) wide elliptical housing and integral upright shield. Provides smooth even illumination of surfaces up to 12 (4M) feet tall. May be used to light large pieces of art light such as tall painting or murals. May also be used to illuminate shelving or indirectly light ceilings.

SPECIFICATIONS

HOUSING

- Extruded aluminum with seamless welded and ground end plates

MOUNTING

- Cantilevered. See mounting options (Below)

ELECTRICAL

- Remote transformer. Integral dimmable electronic transformer available with 6" (150mm) lamp spacing. 120v primary lead, (220v, 240v, 277v available), 11.75v secondary with overload protection. See mounting options for electrical connections.

LAMP

- MR-11 (FSS) narrow spot 35w max

SOCKET

- Extruded aluminum socket plate
- G4/G6 ceramic socket with high temperature, teflon coated lead wires

LENS

- Borosilicate lens

TRIM

- Die-cast aluminum tubular shield

FINISH

- Powder paint available in black and white as standard
- Additional standard colors, RAL palette, custom finishes available

LABELS

-  , US tested to UL standards 1598, Damp location

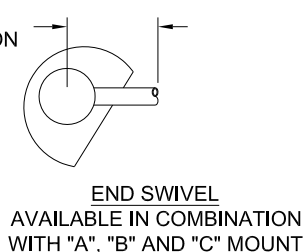
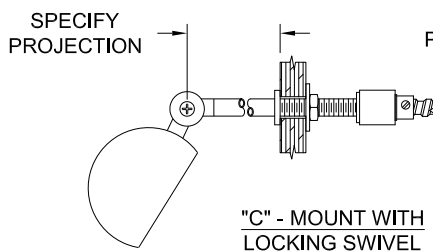
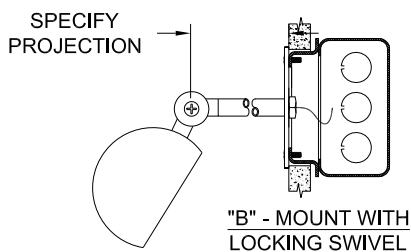
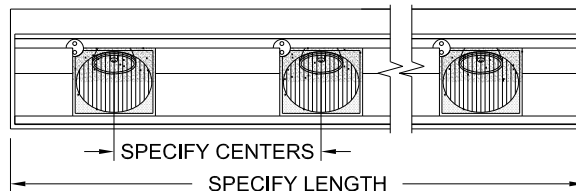
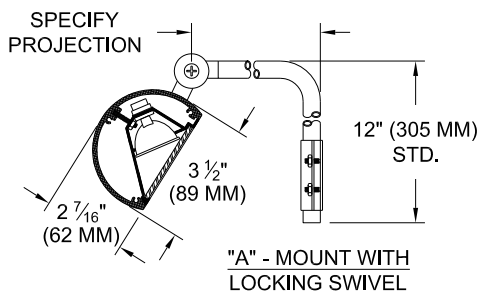
JOB: _____

SPECIFIER: _____

TYPE: _____

QUANTITY: _____

SIGNATURE: _____



ORDERING INFORMATION

304-MR11	LENGTH	PROJECTION	TRANSFORMER	MOUNTING	FINISH
Elliptical Picture Light 4 = 4" (100mm) o.c.* 6 = 6" (150mm) o.c. or custom spacing *4" not applicable for Integral Electronic	Specify length in 1' (300mm) increments* *2' (600mm) minimum	3 = 3" (75mm) 6 = 6" (150mm) 9 = 9" (225mm) 12 = 12" (300mm) or custom projection	CX= Clock Outlet* 120 EX= Electronic 220 RX= Remote 240 277 Consult Factory*	A = Cord & Plug B = J-Box C = Through Panel E = End Swivel* Available in A,B,C, mount	P14 = White PXX = SLI Color XXXX = RAL # MXX = Metal Finish CST = Custom Click Here for more Finishes



Patent Pending.
These specifications subject to change without notice.

www.specialtylightingindustries.com
1306 Doris Avenue, Ocean, NJ 07712 USA
800.462.7812 732.517.0800 FAX:732.517.0971