

Multi-lamp, low voltage halogen or line voltage krypton extruded picture light with 2 1/2" wide elliptical housing.

TYPE: _____

JOB: _____

SPECIFIER: _____

SPECIFICATIONS

HOUSING - Extruded aluminum with seamless welded and ground end plates.

MOUNTING - Cantilevered. See mounting options.

ELECTRICAL - See mounting option for electrical connection.

LAMP - T2¼ - T3 frosted 12v or 24v, T4 frosted DC bayonet base 120v 20w max. supplied by others

LABELS - UL, C-UL

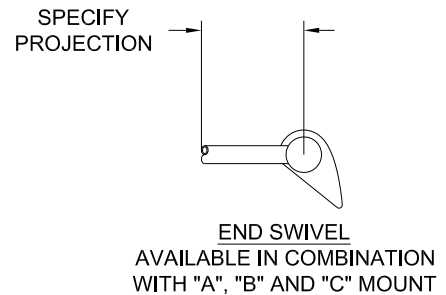
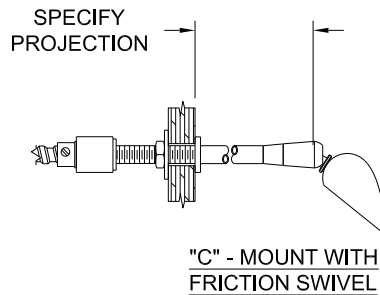
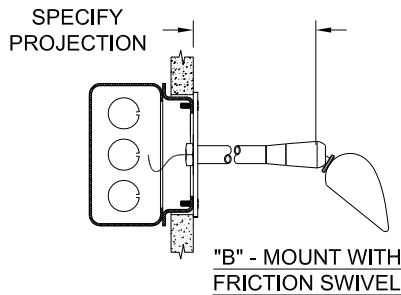
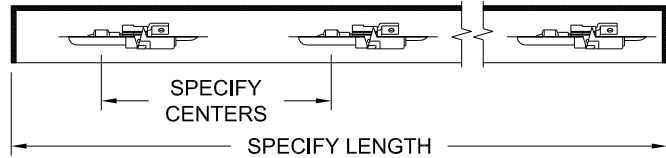
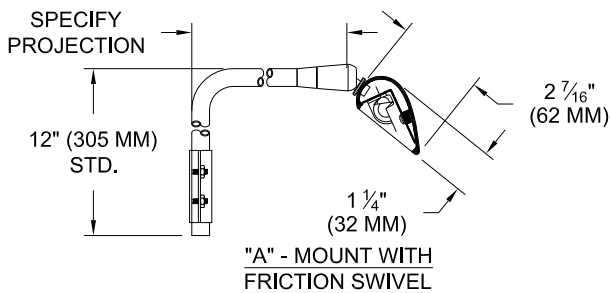
SOCKET - Precision die formed aluminum socket plate. Nickel plated steel double contact bayonet base with stainless steel spring for optimum contact. High temperature silicone lead wires. Socket pivots for easy relamping.

LENS - Contact factory for availability.

FINISH - Aluminum with laquer top coat or powder paint. Available in black, white or RAL colors. Consult factory for custom finishes.

APPLICATIONS

Designed as an art light to provide even illumination on works of art up to 4 feet tall. May also be used to indirectly light ceilings.



ORDERING INFORMATION

HOUSING	LAMP SPACING	LENGTH	PROJECTION	MOUNTING	FINISH
206-T3/4					
Picture light T3 = Low Voltage* T4 = Line Voltage <small>*Requires remote transformer</small>	4.5 = 4.5 Inches 6 = 6 Inches	Specify exact length	Specify exact length	A = Cord & Plug B = J-Box C = Through Panel D = Desk/Lectern E = End Swivel	WHT = White BLK = Black XXXX = RAL # CST = Custom (supply chip) PA = Polished aluminum SA = Satin aluminum PN = Polished Nickel SN = Satin Nickel CHR = Chrome

This information is provided as a specification aid. A submittal will be prepared by the manufacturer for approval prior to fabricating this product.



SPECIALTY LIGHTING INDUSTRIES, INC.

NOTE: These specifications subject to change without notice.

www.specialtylightingindustries.com

1306 DORIS AVENUE, OCEAN, NJ 07712 USA 800.462.7812 732.517.0800 FAX 732.517.0971 © 2006