

Multi-lamp, low voltage halogen or line voltage krypton extruded picture light with 1 5/8" diameter tubular housing. Designed as an art light to provide even illumination on works of art up to 4 feet tall. May also be used to indirectly light ceilings.

SPECIFICATIONS

HOUSING

- Extruded brass or aluminum with seamless welded and ground end plates.

MOUNTING

- Cantilevered. See mounting options (Below)

ELECTRICAL

- See mounting options for electrical connections

LAMP

- T2¼ - T3 frosted 12v or 24v, T4 frosted DC bayonet base 120v 20w max. supplied by others

SOCKET

- Precision die formed aluminum socket plate
- Nickel plated steel double contact bayonet base with stainless steel spring for optimum contact
- High temperature silicone lead wires. Socket pivots for easy relamping

TRIM

- Die-cast aluminum tubular shield

FINISH

- Brass or aluminum with laquer top coat or powder paint
- Additional standard colors, RAL palette, custom finishes available

LABELS

-  , US tested to UL standards 1598, Damp location

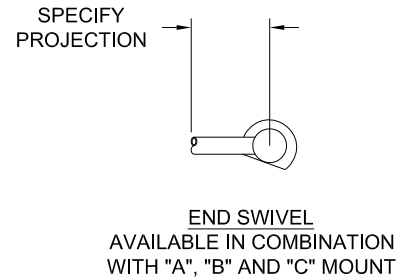
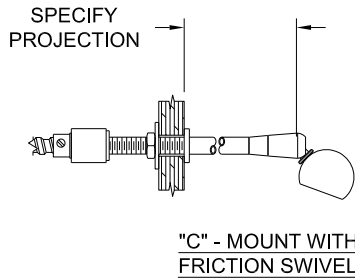
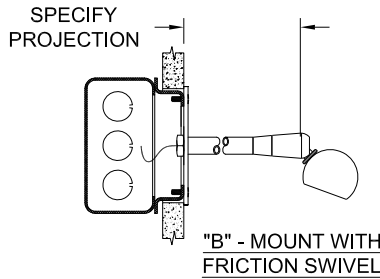
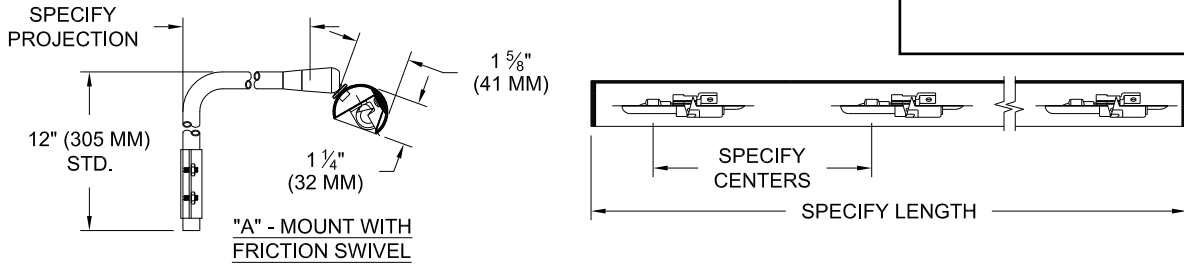
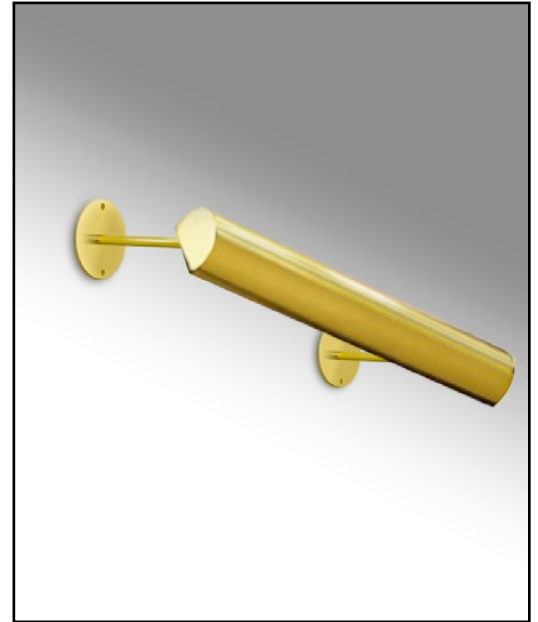
JOB: _____

SPECIFIER: _____

TYPE: _____

QUANTITY: _____

SIGNATURE: _____



ORDERING INFORMATION

201-T34	LAMP SPACING	LENGTH	PROJECTION	MOUNTING	FINISH
Picture Light (T3/T4) T3 = Low Voltage* T4 = Line Voltage *Requires remote transformer	4.5 = 4.5 inches 6 = 6 inches	Specify length in 1' (300mm) increments*	3 = 3" (75mm) 6 = 6" (150mm) 9 = 9" (225mm) 12 = 12" (300mm) or custom projection	A = Cord & Plug B = J-Box C = Through Panel E = End Swivel* Available in A,B,C, mount	P14 = White MA8= Polished Alum. BLK=Black MA7= Satin Aluminum XXXX = RAL# MB3= Polished brass CST = Custom MB5= Satin Brass P09= Antique Brass

[Click Here for more Finishes](#)



Patent Pending.
These specifications subject to change without notice.

www.specialtylightingindustries.com
1306 Doris Avenue, Ocean, NJ 07712 USA
800.462.7812 732.517.0800 FAX:732.517.0971