

# RECTILINEAR APERTURE RECESSED WALL WASHER

1249WW-2LED-AD-UH

Dual lamp, solid state light engine, recessed wall washer with 4"x 8" (100mm x 200mm) rectilinear flangeless trim. Wallwashing in medium to tall ceiling heights typically found in residential, commercial and retail applications. Suitable for new construction. Ambient-Dim™ provides Superior CRI at all dimming levels.

## SPECIFICATIONS

### HOUSING

- Precision die-formed heavy gauge aluminum with extruded ceiling collar

### MOUNTING

- Recessed in architectural ceiling

### ELECTRICAL

- Integral dimmable electronic driver with internal short circuit protection
- 120v-277v primary, compatible with 0-10v dimmers
- Available for 120v phase control and Lutron

### LAMP

- (2) AmbientDim™ LEDs supplied with fixture

### SOCKET

- Precision aluminum yoke with CNC machined lampholder assembly
- Usocket™** allows easy field replacement of light engine

### LENS

- Frosted Supertex borosilicate spread lens, hinged for relamping


### TRIM

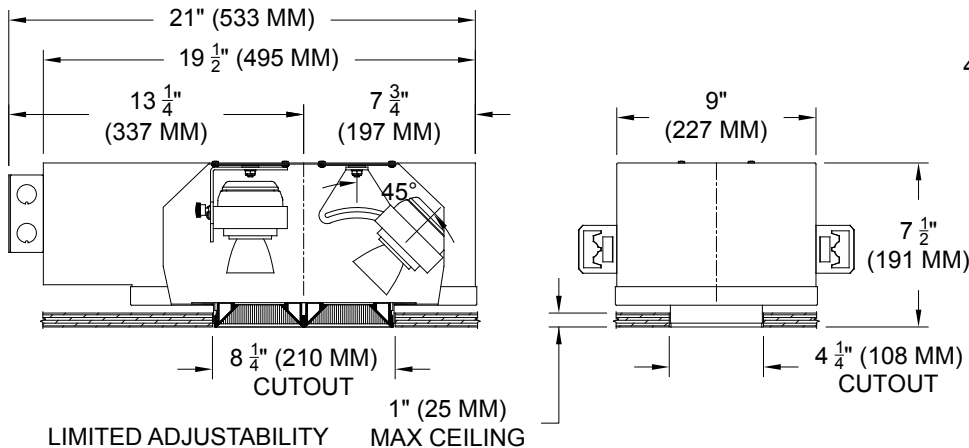
- Flangeless, two piece die-cast aluminum pyramidal shield
- ST trim fully sealed and gasketed

### FINISH

- Black powder paint housing
- Aperture trim available in black and white as standard
- Solid wood, additional colors, RAL palette, custom finishes available

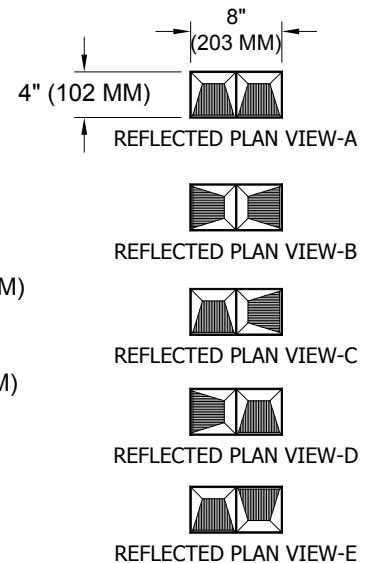
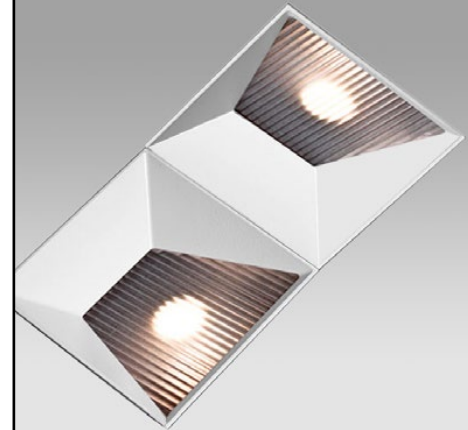
### LABELS

-  , US tested to UL standards 1598, Damp location



**AmbientDim™**

REFLECTED PLAN VIEW-C



## ORDERING INFORMATION

MODEL	PLAN VIEW	TRIM	DRIVER	TRIM FINISH	APERTURE LENS
1249WW-2LED-AD-UH			<b>AD14</b>		<b>82A</b>
Universal Housing Ambient Dimming LED  *CCT Max 3000K-1900K	<b>WWA</b> = Double <b>WWB</b> = Opposite <b>WWC</b> = Left <b>WWD</b> = Right <b>WWE</b> = Cross	<b>ZT</b> =Zero Trim <b>PT</b> =Panel Trim**  **WXX only	<b>AD14</b> =350ma, 14.5W, 1000lm *Add <b>DM2</b> for 2 wire dimming *Add <b>LT2</b> for Lutron 2 wire *Add <b>LT3</b> for Lutron 3 wire *Add <b>LT5</b> for Lutron 5 wire *Add <b>LTB</b> for Lutron Fade-to-Black	<b>P14</b> = White <b>BLK</b> =Black <b>PXX</b> = SLI Color <b>WXX</b> = Wood <b>XXXX</b> = RAL # <b>CST</b> = Custom	<b>82A</b> = Frosted Supertex



Patent Pending.  
These specifications subject to change without notice.

**www.specialtylightingindustries.com**

1306 Doris Avenue, Ocean, NJ 07712 USA

800.462.7812 732.517.0800 FAX:732.517.0971

07/17