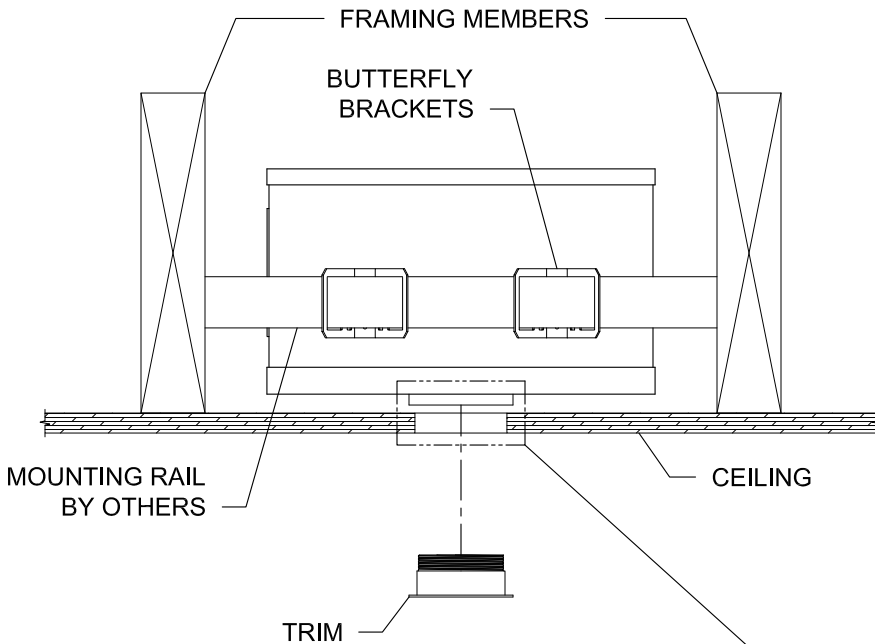


4500 FLANGED INTERFACE DETAIL



1. Install mounting rails (Supplied by others.) through butterfly brackets on fixture.
2. Secure mounting rails to framing members. Ensuring bottom face of collar is a minimum of 3/4" from face of ceiling as shown in FIG A. (In case of custom custom fixture/order, please refer to submittal information for location.)
3. Wire fixture, make sure to leave power feed down through opening in collar.
4. Cut 2-7/8" dia. opening in millwork and install over fixture. Install trim.
5. Make power connection, install cassette and test with power.

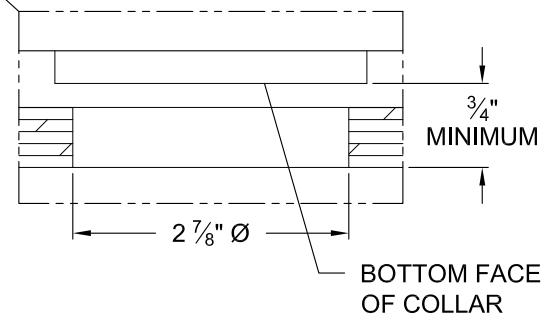
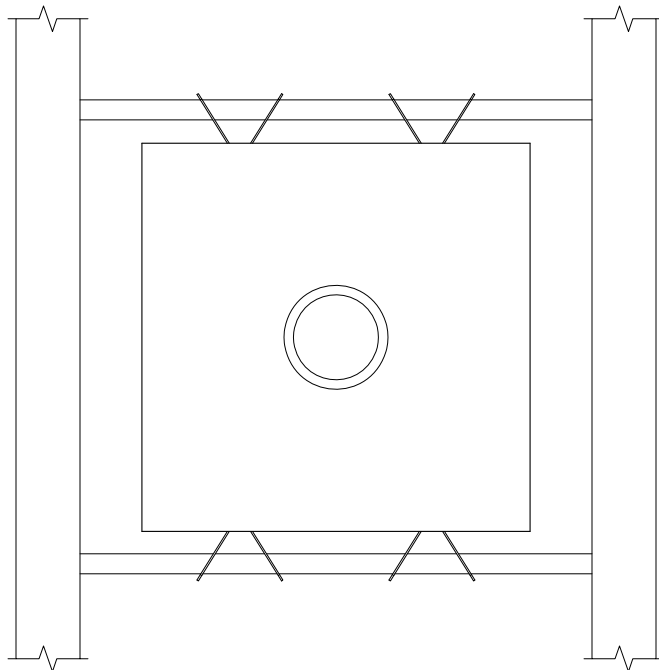


FIG A



**SPECIALTY LIGHTING
INDUSTRIES, INC.**

1306 DORIS AVENUE, OCEAN, NJ 07712 USA

800.462.7812 732.517.0800 FAX 732.517.0971

www.specialtylightingindustries.com